



Marine Product Guide

Engines and Gensets

2012/2013



Marine Product Guide

Engines and Gensets

Contents

Introduction	2
Rating Definitions	4
Fuel Consumption Method	6
Engine Model Name Explanation	6
Product Listing	7
Propulsion Specifications	13
Diesel-Electric Propulsion Specifications	43
Auxiliary Generator Specifications	55
Genset Specifications	81
Gas-Electric Propulsion Specifications	89
International Offices	95

Mitsubishi Marine Power

Mitsubishi Heavy Industries (MHI) boasts a long tradition in manufacturing engines, tracing back to the production of Japan's first unit for commercial use in 1917 and spanning both diesel and gasoline types in two- and four-stroke configurations. MHI continues to supply engines for a multitude of applications, from industrial and marine to off-highway and agricultural uses, and in line-ups ranging from as small as 0.3kW to gigantic 66,000kW. As a result, MHI now ranks as one of the worlds leading engine manufacturers.

To date MHI has supplied more than 120,000 marine diesel engines for both main propulsion and auxiliary applications in ships and boats. They are preferred especially in applications demanding dependable, continuous operation combined with outstanding durability, excellent fuel efficiency, and minimal requirements with respect to lubricants and spare parts. This way, MHI marine engines offer the dual advantages of ease of operation and optimum ease of maintenance.

The company's impressive record of engine deliveries is proof of MHI's close and unbroken relationship with marine industries.

Marine Engines Made in Japan

All MHI marine diesel engines are manufactured to the highest standards applying state-of-the-art production facilities combined with experienced workmanship. Production is carried out exclusively at the Sagami-hara Works in Japan, a facility conforming to strict ISO-9001 international quality standards as certified by DNV (Det Norske Veritas, Norway).

MHI marine engines have been purpose-designed for marine use. The base of the engine was designed based on marine vessels and tanks used in heavy duty circumstances.

According to our customers, the engines perform excellent in terms of reliability, durability, fuel consumption, long overhaul and easy maintenance.

Emissions

MHI has long been engaged in the production of four-stroke cycle diesels, and already its conventional models incorporate a number of important breakthroughs. Next to that, MHI makes significant investments in the Environment-friendly engines development.

A summary of major regulations which Mitsubishi Heavy Industries adheres to is listed on the next page.

Regulations summary

IMO - Annex VI of MARPOL 73/78 which International Maritime Organization (IMO) has issued, entered into force on 19 May 2005. It applies retroactively to new engines greater than 130kW and installed on vessels constructed from 1 January 2000 or to those which will undergo a major conversion after that date. The regulation also applies to fixed and floating rigs and to drilling platforms.

EU (Includes CCNR) - The emission limitations are valid for propulsion and auxiliary engines of inland vessels in EU inland waterways (Non-Road Directive 97/68/ EC, amended 2010/26/EU). Alternatively, the limitations set by the Central Commission for Navigation on the Rhine (CCNR) may be applied (mutual agreement was reached on 1 July 2007).

The following classifications will appear on subsequent pages to identify the regulation with which the engine will be certified or compliant once placed on the market:

IMO1 - IMO Tier1 compliant; Engine International Air Pollution Prevention (EIAPP) certificates available. IMO1 is available for replacement only.

IMO2 - IMO Tier2 compliant; Engine International Air Pollution Prevention (EIAPP) certificates available.

EU - EU Stage IIIA certified

CCNR2 - CCNR Stage II certified

Classification Approvals

Mitsubishi engines are delivered tested and ready for installation on board. They are type approved by the major classification societies and can be delivered with certification by:

- American Bureau of Shipping (ABS)
- China Classification Society (CCS)
- Bureau Veritas (BV)
- Det Norske Veritas (DNV)
- Germanischer Lloyd (GL)
- Korean Register of Shipping (KR)
- Lloyds Register (LR)
- Nippon Kaiji Kyokai (NK)
- Registro Italiano Navale (RINA)

For more information on marine classification society certification, please contact your local distributor or MHI Equipment Europe B.V.

Propulsion

Heavy Duty (HD)

Typical Operation:

Allowable Load Factor is less than 100% of Rated Power.

Allowable Cruising Speed is less than 100% of Rated Speed.

Operating hours are unlimited per year.

Typical Vessel Application:

Cargo Vessels and Fishing Boats

Medium Duty (MD)

Typical Operation:

Allowable Load Factor is up to 83% of Rated Power.

Allowable Cruising Speed is up to 94% of Rated Speed.

100% of Rated Power is available intermittently for 8hrs per every 24hrs operation.

Operating hours are less than 6,000hrs per year.

Typical Vessel Application:

Working Boats, Passenger Vessels and Ferry Boats

Light Duty (LD)

Typical Operation:

Allowable Load Factor is up to 75% of Rated Power.

Allowable Cruising Speed is up to 91% of Rated Speed.

100% of Rated Power is available intermittently for 1hr per every 6hrs operation.

Operating hours are less than 3,000hrs per year.

Typical Vessel Application:

Pleasure Boats, High Performance Vessels, and Patrol Boats

Harbour Tugboat (HT)

Typical Operation:

100% of Rated Power is available intermittently for 8hrs per every 24hrs operation.

Operating hours are less than 6,000hrs per year.

Average Load Factor is 60-80% of Rated Power.

Typical Vessel Application:

Harbour Tugboats

Diesel-Electric Propulsion

Typical Operation:

Average Load Factor is 60-80% of Rated Power.

Operating hours are 3,000- 6,000hrs per year.

Momentary overload: 110% is available for max. 25hrs per year on emergency basis.

100% of Rated Power is available for maximum of 3hrs per every 12hrs operation.

Typical Vessel Application:

Offshore Vessels, Inland Cargo Vessels, and Ferries.

Diesel-Electric Propulsion for SU engines:

Continuous Operation:

Allowable Load Factor is less than 100% of Rated Power.

Operating hours are unlimited per year.

Overload: 110% is available for max. 25hrs per year on emergency basis.

Typical Vessel Application:

Ocean/sea going Cargo- and Tugboats.

Intermittent Operation:

Average Load Factor is 60-80% of Rated Power.

100% of Rated Power is available intermittently for less than 3hrs per every 12hrs operation.

Operating hours: 3,000- 4,000hrs per year.

Overload: 110% is available for max. 25hrs per year on emergency basis.

Typical Vessel Application:

Offshore Vessels, Harbour Tugboat.

Auxiliary Generator

Main Power Supply

Typical Operation:

Average Load Factor is 60-80% of Rated Power.

Operating hours: 3,000- 4,000 hrs per year.

Momentary overload: 110 % is available for governing purpose

Emergency Power Supply

Typical Operation:

Average Load Factor is 60% of Rated Power

Operating hours: up to 500hrs per year.

Overload: 110% can be used for less than 25hrs per year

Gas-Electric Propulsion

Typical Operation:

Average Load Factor is 60-80% of Rated Power.

Operating hours are 3,000- 6,000hrs per year.

Momentary overload: 110 % is available for less than 25hrs per year on emergency basis.

100% of Rated Power is available for maximum of 3hrs per every 12hrs operation.

Typical Vessel Application:

Offshore Vessels, Inland Cargo Vessels, and Ferries

FUEL CONSUMPTION METHOD

The fuel consumption varies according to test condition, specification and application for each customer.

To obtain the fuel consumption based on the most typical test condition, we adopted average fuel consumption recommended by ISO 8178 (E3 standard test cycle for propulsion application and D2 for auxiliary applications) except for SU Series*. The fuel consumption values published in this Marine Product Guide were calculated taking each steady-state mode into account. See weighting factors shown below.

* SU Series (Middle-Speed Engine) belongs in different category from other High-Speed Engine models, SU Series indicates fuel consumption value at 100% rated power with g/kWh.

Weighting Factors of Type E3 ISO 8178 Test Cycles

Mode Number	1	2	3	4
Power (%)	100	75	50	25
Weighting Factor	0.20	0.50	0.15	0.15

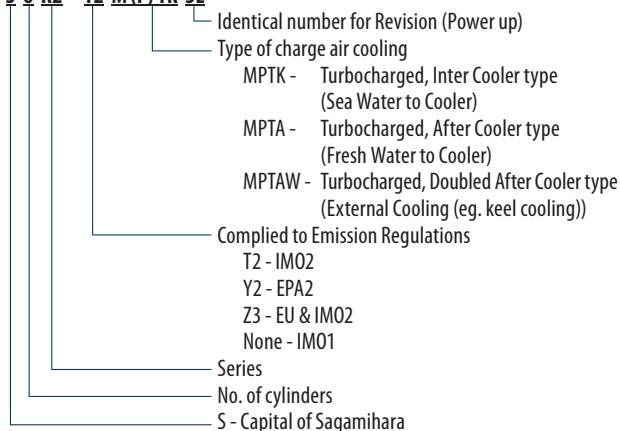
Weighting Factors of Type D2 ISO 8178 Test Cycles

Mode Number	1	2	3	4	5
Power (%)	100	75	50	25	10
Weighting Factor	0.05	0.25	0.30	0.30	0.10

Fuel Consumption is based on ISO3046/1 with 5% tolerance at rated power, weighing 836g/liter based on the regulations of JIS (Japanese Industrial Standards) and a LHV of 42,780 kJ/kg, excluding pumps.

EXPLANATION OF THE ENGINE MODEL NAMES

S 6 R2 - T2 M(P)TK 3L



Product Listing

Propulsion Products

kW	BHP	RPM	Engine Model	Rating	Emission	Page
320	429	1,940	S6B3-MPTA	HD	IMO1	14
320	430	2,000	S6B3-T2MPTAW	HD	IMO2	15
345	462	1,940	S6B3-MPTK	HD	IMO1	16
350	469	2,000	S6B3-MPTA	MD	IMO1	14
360	483	1,840	S6A3-MPTAW	HD	IMO2/CCNR2	17
380	509	2,000	S6B3-MPTK	MD	IMO1	16
405	543	1,840	S6A3-MPTK	HD	IMO1	18
440	590	1,600	S6R-MPTA	HD	IMO1	23
445	597	1,900	S6A3-MPTK	MD	IMO1	18
445	597	1,350	S6R2-MPTA	HD	IMO1	26
470	630	1,600	S6R-MPTK	HD	IMO1	24
470	630	1,600	S6R-(Z3)MPTAW	HD	IMO2/EU	25
480	643	1,350	S6R2-MPTK	HD	IMO1	27
480	643	1,350	S6R2-T2MPTK	HD	IMO2	28
485	650	1,650	S6R-MPTA	MD	IMO1	23
490	657	1,960	S6A3-MPTK	LD	IMO1	18
490	657	1,400	S6R2-MPTA	MD	IMO1	26
520	697	1,650	S6R-(Z3)MPTAW	MD	IMO2	25
520	697	1,650	S6R-MPTK	MD	IMO1	24
530	710	1,400	S6R2-MPTK	MD	IMO1	27
565	757	1,500	S6R2-MPTA	LD	IMO1	26
570	764	1,800	S6R-MPTA	LD	IMO1	23
605	811	1,800	S6R-MPTK	LD	IMO1	24
605	811	1,800	S6R-(Z3)MPTAW	LD	IMO2/EU	25
610	818	1,500	S6R2-MPTK	LD	IMO1	27
610	818	1,500	S6R2-T2MPTK	LD	IMO2	28
634	850	1,940	S12A2-C2MPTK	HD	CCNR2	22
634	850	1,940	S12A2-MPTA	HD	IMO1	19
701	940	2,000	S12A2-MPTA	MD	IMO1	19
701	940	1,940	S12A2-MPTK	HD	IMO1	20
701	940	1,940	S12A2-(Z3)MPTAW	HD	IMO2/EU	21
776	1,040	2,100	S12A2-MPTA	LD	IMO1	19
776	1,040	2,000	S12A2-MPTK	MD	IMO1	20
776	1,040	2,000	S12A2-(Z3)MPTAW	MD	IMO2	21
858	1,150	2,100	S12A2-MPTK	LD	IMO1	20
880	1,180	1,600	S12R-MPTA	HD	IMO1	29
940	1,260	1,600	S12R-C2MPTK	HD	CCNR2	32
940	1,260	1,600	S12R-MPTK	HD	IMO1	30
940	1,260	1,600	S12R-(Z3)MPTAW	HD	IMO2/EU	31
970	1,300	1,650	S12R-MPTA	MD	IMO1	29
1,007	1,350	1,060	S6U-(C2)MPTK	HD	IMO2/CCNR2	38
1,040	1,394	1,650	S12R-(Z3)MPTAW	MD	IMO2	31
1,040	1,394	1,650	S12R-MPTK	MD	IMO1	30
1,040	1,394	930	S6U2-MPTK	HD	IMO2/CCNR2	39
1,103	1,478	1,150	S6U-(C2)MPTK	HT	IMO2	38

kW	BHP	RPM	Engine Model	Rating	Emission	Page
1,119	1,500	1,100	S6U-(C2)MPTK	MD	IMO2/CCNR2	38
1,140	1,528	1,800	S12R-MPTA	LD	IMO1	29
1,156	1,550	960	S6U2-MPTK	MD	IMO2	39
1,170	1,568	1,600	S16R-MPTA	HD	IMO1	33
1,210	1,622	1,800	S12R-MPTK	LD	IMO1	30
1,250	1,676	1,600	S16R-C2MPTK	HD	CCNR2	36
1,250	1,676	1,600	S16R-MPTK	HD	IMO1	34
1,250	1,676	1,600	S16R-(Z3)MPTAW	HD	IMO2/EU	35
1,290	1,729	1,650	S16R-MPTA	MD	IMO1	33
1,343	1,800	1,060	S8U-(C2)MPTK	HD	IMO2/CCNR2	40
1,380	1,850	1,650	S16R-(Z3)MPTAW	MD	IMO2	35
1,380	1,850	1,650	S16R-MPTK	MD	IMO1	34
1,450	1,944	1,350	S16R2-T2MPTAW	HD	IMO2	37
1,470	1,970	1,150	S8U-(C2)MPTK	HT	IMO2	40
1,492	2,000	1,100	S8U-(C2)MPTK	MD	IMO2/CCNR2	40
1,520	2,038	1,800	S16R-MPTA	LD	IMO1	33
1,600	2,146	1,400	S16R2-T2MPTAW	MD	IMO2	37
1,610	2,158	1,800	S16R-MPTK	LD	IMO1	34
1,885	2,528	1,500	S16R2-T2MPTAW	LD	IMO2	37
2,014	2,700	1,060	S12U-MPTK	HD	IMO2	41
2,205	2,955	1,150	S12U-MPTK	HT	IMO2	41
2,238	3,000	1,100	S12U-MPTK	MD	IMO2	41
2,686	3,600	1,060	S16U-MPTK	HD	IMO2	42
2,940	3,940	1,150	S16U-MPTK	HT	IMO2	42
2,984	4,000	1,100	S16U-MPTK	MD	IMO2	42

Diesel-Electric Propulsion Products

kW	BHP	Hz	Engine Model	Emission	Page
500	670	60	S6R2-T2MPTK	IMO2	46
545	731	50	S6R-(Z3)MPTAW	IMO2	45
577	773	60	S6R-(Z3)MPTAW	IMO2	45
640	858	50	S6R2-T2MPTK	IMO2	46
709	950	50	S12A2-(Z3)MPTAW	IMO2	44
752	1,008	60	S12A2-(Z3)MPTAW	IMO2	44
840	1,126	60	S12R-(Z3)MPTAW	IMO2	47
1,120	1,501	50	S12R-(Z3)MPTAW	IMO2	47
1,120	1,501	60	S16R-(Z3)MPTAW	IMO2	48
1,154	1,574	60	S12R-(Z3)MPTAW	IMO2	47
1,500	2,011	50	S16R-(Z3)MPTAW	IMO2	48
1,536	2,059	60	S16R-(Z3)MPTAW	IMO2	48
1,568	2,103	60	S16R2-T2MPTAW	IMO2	49
1,960	2,628	50	S16R2-T2MPTAW	IMO2	49

Diesel-Electric Continuous Operation (SU engines)

kW	BHP	Hz	Engine Model	Emission	Page
1,045	1,401	60	S6U-MPTK	IMO2	50
1,142	1,531	50	S6U-MPTK	IMO2	50
1,161	1,556	60	S6U2-MPTK	IMO2	51
1,205	1,615	60	S6U-MPTK	IMO2	50
1,234	1,654	50	S6U2-MPTK	IMO2	51
1,394	1,868	60	S8U-MPTK	IMO2	52
1,522	2,040	50	S8U-MPTK	IMO2	52
1,608	2,155	60	S8U-MPTK	IMO2	52
2,090	2,801	60	S12U-MPTK	IMO2	53
2,283	3,060	50	S12U-MPTK	IMO2	53
2,412	3,233	60	S12U-MPTK	IMO2	53
2,787	3,735	60	S16U-MPTK	IMO2	54
3,045	4,081	50	S16U-MPTK	IMO2	54
3,215	4,309	60	S16U-MPTK	IMO2	54

Diesel-Electric Intermittent Operation (SU engines)

kW	BHP	Hz	Engine Model	Emission	Page
1,150	1,543	60	S6U-MPTK	IMO2	50
1,250	1,678	60	S6U2-MPTK	IMO2	51
1,270	1,704	50	S6U-MPTK	IMO2	50
1,343	1,802	60	S6U-MPTK	IMO2	50
1,363	1,829	50	S6U2-MPTK	IMO2	51
1,533	2,057	60	S8U-MPTK	IMO2	52
1,693	2,272	50	S8U-MPTK	IMO2	52
1,790	2,402	60	S8U-MPTK	IMO2	52
2,299	3,085	60	S12U-MPTK	IMO2	53
2,541	3,410	50	S12U-MPTK	IMO2	53
2,685	3,603	60	S12U-MPTK	IMO2	53
3,065	4,113	60	S16U-MPTK	IMO2	54
3,388	4,547	50	S16U-MPTK	IMO2	54
3,580	4,804	60	S16U-MPTK	IMO2	54

Auxiliary Generator Products

kW	BHP	Hz	Engine Model	Emission	Page
335	450	50	S6B3-T2MPTAW	IM02	56
375	503	60	S6B3-T2MPTAW	IM02	56
400	536	50	S6A3-MPTA	IM01	57
430	576	50	S6A3-MPTK	IM01	58
460	617	60	S6A3-MPTA	IM01	57
485	650	60	S6R2-MPTA	IM01	65
500	670	60	S6R2-MPTK	IM01	66
500	670	60	S6R2-T2MPTK	IM02	67
515	690	50	S6R-MPTA	IM01	62
545	731	50	S6R-MPTK	IM01	63
545	731	50	S6R-(Z3)MPTAW	IM02	64
595	798	50	S6R2-MPTA	IM01	65
595	798	60	S6R-MPTA	IM01	62
635	851	60	S6R-MPTK	IM01	63
635	851	60	S6R-(Z3)MPTAW	IM02/EU	64
640	858	50	S6R2-MPTK	IM01	66
640	858	50	S6R2-T2MPTK	IM02	67
679	910	50	S12A2-MPTA	IM01	59
709	950	50	S12A2-MPTK	IM01	60
709	950	50	S12A2-(Z3)MPTAW	IM02	61
761	1,020	60	S12A2-MPTA	IM01	59
828	1,110	60	S12A2-MPTK	IM01	60
828	1,110	60	S12A2-(Z3)MPTAW	IM02	61
840	1,126	60	S12R-(Z3)MPTAW	IM02	70
1,110	1,488	50	S12R-MPTA	IM01	68
1,120	1,501	50	S12R-MPTK	IM01	69
1,120	1,501	50	S12R-(Z3)MPTAW	IM02	70
1,120	1,501	60	S16R-(Z3)MPTAW	IM02	73
1,150	1,543	60	S6U-MPTK	IM02	75
1,190	1,595	60	S12R-MPTA	IM01	68
1,250	1,678	60	S6U2-MPTK	IM02	76
1,270	1,702	60	S12R-MPTK	IM01	69
1,270	1,702	60	S12R-(Z3)MPTAW	IM02	70
1,270	1,704	50	S6U-MPTK	IM02	75
1,343	1,802	60	S6U-MPTK	IM02	75
1,363	1,829	50	S6U2-MPTK	IM02	76
1,480	1,984	50	S16R-MPTA	IM01	71
1,500	2,011	50	S16R-MPTK	IM01	72
1,500	2,011	50	S16R-(Z3)MPTAW	IM02	73
1,533	2,057	60	S8U-MPTK	IM02	77
1,568	2,103	60	S16R2-T2MPTAW	IM02	74
1,590	2,131	60	S16R-MPTA	IM01	71
1,690	2,265	60	S16R-(Z3)MPTAW	IM02	73
1,690	2,265	60	S16R-MPTK	IM01	72
1,693	2,272	50	S8U-MPTK	IM02	77
1,790	2,402	60	S8U-MPTK	IM02	77
1,960	2,628	50	S16R2-T2MPTAW	IM02	74
2,299	3,085	60	S12U-MPTK	IM02	78
2,541	3,410	50	S12U-MPTK	IM02	78
2,685	3,603	60	S12U-MPTK	IM02	78
3,065	4,113	60	S16U-MPTK	IM02	79
3,388	4,547	50	S16U-MPTK	IM02	79
3,580	4,804	60	S16U-MPTK	IM02	79

Genset Products

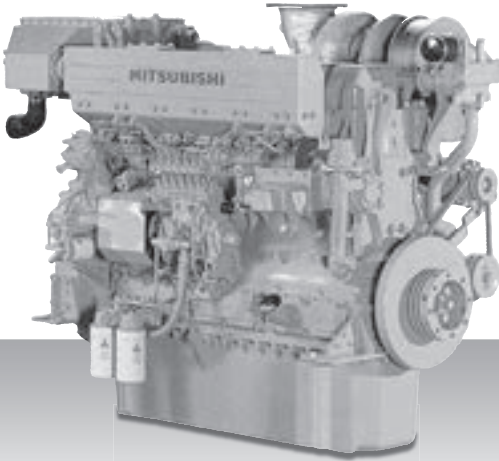
kVA	kWe	Hz	Engine Model	Emission	Page
Diesel-Electric Propulsion					
652	522	50	MAS 650-S	IM02	82
684	548	60	MAS 650-S	IM02	82
594	476	60	MAS 760-S	IM02	83
765	612	50	MAS 760-S	IM02	83
847	678	50	MAS 850-S	IM02	84
898	718	60	MAS 850-S	IM02	84
999	799	60	MAS 1350-S	IM02	85
1,337	1,070	60	MAS 1795-S	IM02	86
1,351	1,081	50	MAS 1350-S	IM02	85
1,385	1,108	60	MAS 1350-S	IM02	85
1,796	1,437	50	MAS 1795-S	IM02	86
1,857	1,485	60	MAS 1795-S	IM02	86
1,881	1,505	60	MAS 2350-S	IM02	87
2,358	1,886	50	MAS 2350-S	IM02	87
Auxiliary Generator					
652	522	50	MAS 650-S	IM02	82
753	603	60	MAS 650-S	IM02/EU	82
594	476	60	MAS 760-S	IM02	83
765	612	50	MAS 760-S	IM02	83
847	678	50	MAS 850-S	IM02	84
988	790	60	MAS 850-S	IM02	84
999	799	60	MAS 1350-S	IM02	85
1,337	1,070	60	MAS 1795-S	IM02	86
1,351	1,081	50	MAS 1350-S	IM02	85
1,529	1,223	60	MAS 1350-S	IM02	85
1,796	1,437	50	MAS 1795-S	IM02	86
1,881	1,505	60	MAS 2350-S	IM02	87
2,041	1,633	60	MAS 1795-S	IM02	86
2,358	1,886	50	MAS 2350-S	IM02	87

Gas-Electric Propulsion Products

kW	BHP	Hz	Engine Model	Test Cycle	Page
316	425	60	GS6R-MPTK	E2	90
361	484	50	GS6R-MPTK	E2	90
394	528	60	GS6R2-MPTK	E2	91
on request	t.b.c.	50	GS6R2-MPTK	E2	91
632	847	60	GS12R-MPTK	E2	92
722	968	50	GS12R-MPTK	E2	92
845	1,132	60	GS16R-MPTK	E2	93
959	1,285	50	GS16R-MPTK	E2	93
1,031	1,382	60	GS16R2-MPTK	E2	94
on request	t.b.c.	50	GS16R2-MPTK	E2	94

Propulsion Specifications

S6B3-MPTA



6-cylinder, 4-cycle, Water cooled, Diesel Engine
Direct-injection, Turbocharged with Air-cooler

Bore x Stroke (mm) : 135 × 170
Displacement (L) : 14.60

Commercial Rating

kW	BHP	RPM	Fuel Cons. L/hr	Rating	Emissions
320	429	1,940	55.7	HD	IM01
350	469	2,000	62.6	MD	IM01

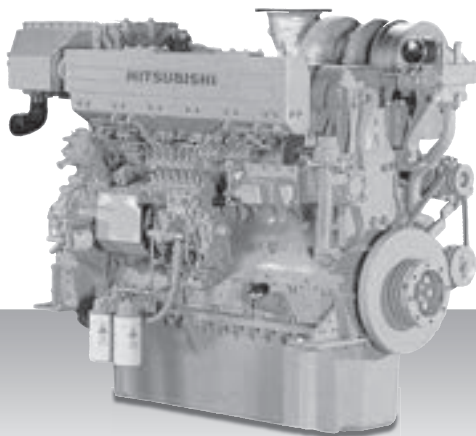
Specifications/data subject to change without prior notice.

Product Dimensions & Dry Weight

L (mm) : 1,465
W (mm) : 873
H (mm) : 1,331
Dry Weight (kg) : 1,300

Dimensions and Weight are based on standard configuration.

S6B3-T2MPTAW



6-cylinder, 4-cycle, Water cooled, Diesel Engine
Direct-injection, Turbocharged with Air-cooler

Bore x Stroke (mm) : 135 × 170
Displacement (L) : 14.60

Commercial Rating

kW	BHP	RPM	Fuel Cons. L/hr	Rating	Emissions
320	430	2,000	t.b.c.	HD	IMO2

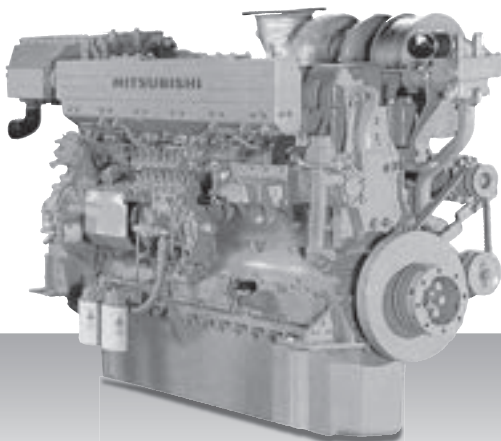
Specifications/data subject to change without prior notice.

Product Dimensions & Dry Weight

L (mm) : 1,465
W (mm) : 873
H (mm) : 1,331
Dry Weight (kg) : 1,300

Dimensions and Weight are based on standard configuration.

S6B3-MPTK



6-cylinder, 4-cycle, Water cooled, Diesel Engine
Direct-injection, Turbocharged with Air-cooler

Bore x Stroke (mm) : 135 × 170
Displacement (L) : 14.60

Commercial Rating

kW	BHP	RPM	Fuel Cons. L/hr	Rating	Emissions
345	462	1,940	59.6	HD	IM01
380	509	2,000	68.0	MD	IM01

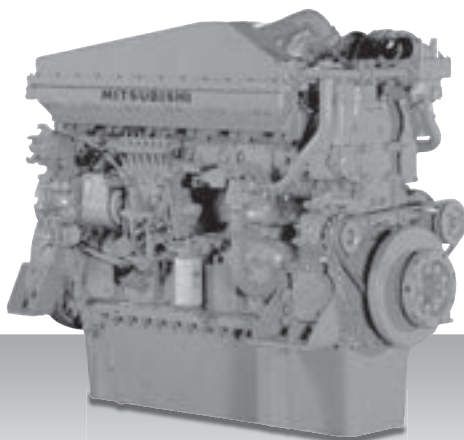
Specifications/data subject to change without prior notice.

Product Dimensions & Dry Weight

L (mm) : 1,834
W (mm) : 873
H (mm) : 1,331
Dry Weight (kg) : 1,300

Dimensions and Weight are based on standard configuration.

S6A3-MPTAW



6-cylinder, 4-cycle, Water cooled, Diesel Engine
Direct-injection, Turbocharged with Air-cooler

Bore x Stroke (mm) : 150 × 175
Displacement (L) : 18.56

Commercial Rating

kW	BHP	RPM	Fuel Cons. L/hr	Rating	Emissions
360	483	1,840	65.7	HD	IMO2/CCNR2

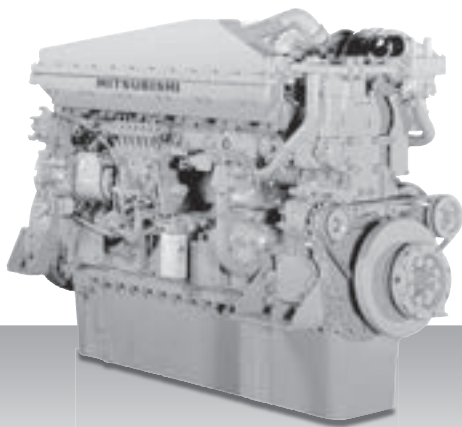
Specifications/data subject to change without prior notice.

Product Dimensions & Dry Weight

L (mm) : 1,636
W (mm) : 1,036
H (mm) : 1,421
Dry Weight (kg) : 1,900

Dimensions and Weight are based on standard configuration.

S6A3-MPTK



6-cylinder, 4-cycle, Water cooled, Diesel Engine
Direct-injection, Turbocharged with Air-cooler

Bore x Stroke (mm) : 150 × 175
Displacement (L) : 18.56

Commercial Rating

kW	BHP	RPM	Fuel Cons. L/hr	Rating	Emissions
405	543	1,840	69.8	HD	IM01
445	597	1,900	78.3	MD	IM01
490	657	1,960	85.9	LD	IM01

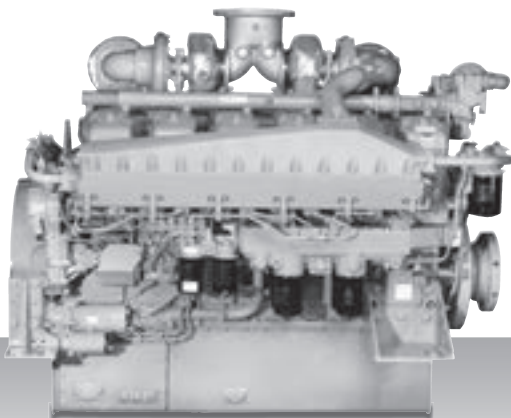
Specifications/data subject to change without prior notice.

Product Dimensions & Dry Weight

L (mm) : 2,037
W (mm) : 927
H (mm) : 1,371
Dry Weight (kg) : 1,900

Dimensions and Weight are based on standard configuration.

S12A2-MPTA



12-cylinder, 4-cycle, Water cooled, Diesel Engine
Direct-injection, Turbocharged with Air-cooler

Bore x Stroke (mm) : 150 × 160

Displacement (L) : 33.93

Commercial Rating

kW	BHP	RPM	Fuel Cons. L/hr	Rating	Emissions
634	850	1,940	112.4	HD	IM01
701	940	2,000	126.3	MD	IM01
776	1,040	2,100	141.6	LD	IM01

Specifications/data subject to change without prior notice.

Product Dimensions & Dry Weight

L (mm) : 2,002

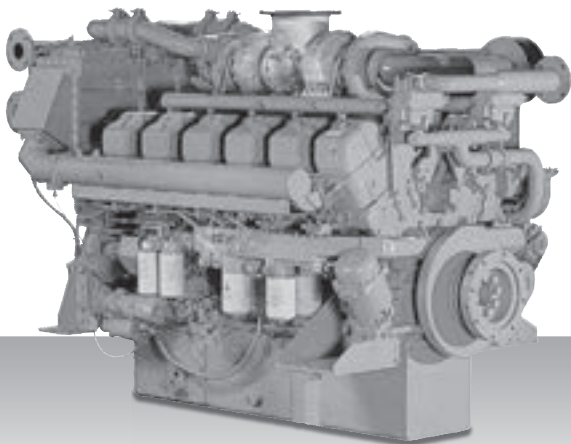
W (mm) : 1,442

H (mm) : 1,596

Dry Weight (kg) : 3,380

Dimensions and Weight are based on standard configuration.

S12A2-MPTK



12-cylinder, 4-cycle, Water cooled, Diesel Engine
Direct-injection, Turbocharged with Air-cooler

Bore x Stroke (mm) : 150 × 160
Displacement (L) : 33.93

Commercial Rating

kW	BHP	RPM	Fuel Cons. L/hr	Rating	Emissions
701	940	1,940	122.3	HD	IM01
776	1,040	2,000	136.6	MD	IM01
858	1,150	2,100	152.7	LD	IM01

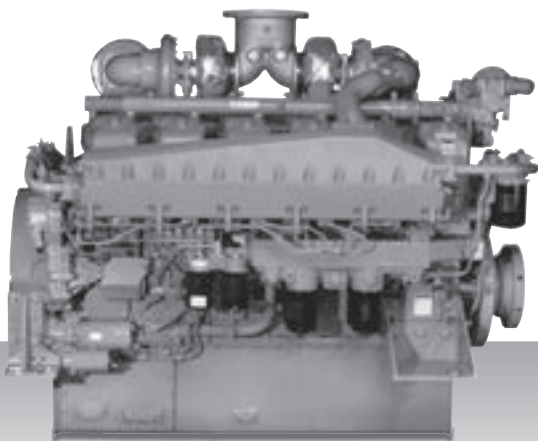
Specifications/data subject to change without prior notice.

Product Dimensions & Dry Weight

L (mm) : 2,291
W (mm) : 1,418
H (mm) : 1,596
Dry Weight (kg) : 3,720

Dimensions and Weight are based on standard configuration.

S12A2-(Z3)MPTAW



12-cylinder, 4-cycle, Water cooled, Diesel Engine
Direct-injection, Turbocharged with Air-cooler

Bore x Stroke (mm) : 150 × 160
Displacement (L) : 33.93

Commercial Rating

kW	BHP	RPM	Fuel Cons. L/hr	Rating	Emissions
701	940	1,940	119.0	HD	IMO2/EU
776	1,040	2,000	131.5	MD	IMO2

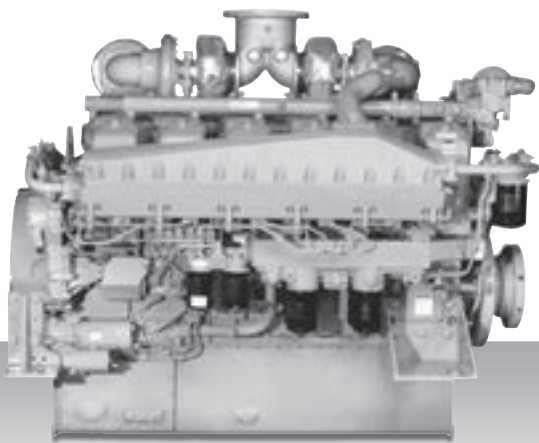
Specifications/data subject to change without prior notice.

Product Dimensions & Dry Weight

L (mm) : 1,948
W (mm) : 1,654
H (mm) : 1,596
Dry Weight (kg) : 3,380

Dimensions and Weight are based on standard configuration.

S12A2-C2MPTK



12-cylinder, 4-cycle, Water cooled, Diesel Engine
Direct-injection, Turbocharged with Air-cooler

Bore x Stroke (mm) : 150 × 160
Displacement (L) : 33.93

Commercial Rating

kW	BHP	RPM	Fuel Cons. L/hr	Rating	Emissions
634	850	1,940	111.9	HD	CCNR2

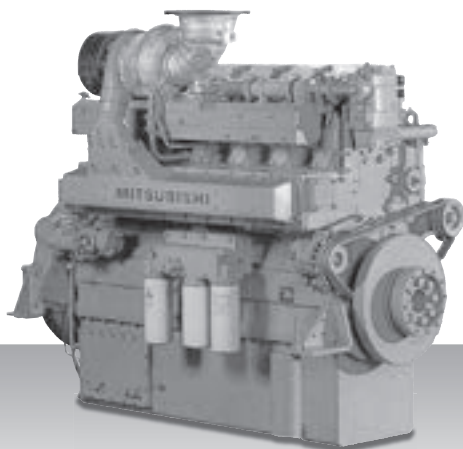
Specifications/data subject to change without prior notice.

Product Dimensions & Dry Weight

L (mm) : 1,948
W (mm) : 1,442
H (mm) : 1,596
Dry Weight (kg) : 3,380

Dimensions and Weight are based on standard configuration.

S6R-MPTA



6-cylinder, 4-cycle, Water cooled, Diesel Engine
Direct-injection, Turbocharged with Air-cooler

Bore x Stroke (mm) : 170 × 180
Displacement (L) : 24.51

Commercial Rating

kW	BHP	RPM	Fuel Cons. L/hr	Rating	Emissions
440	590	1,600	75.9	HD	IM01
485	650	1,650	84.1	MD	IM01
570	764	1,800	97.3	LD	IM01

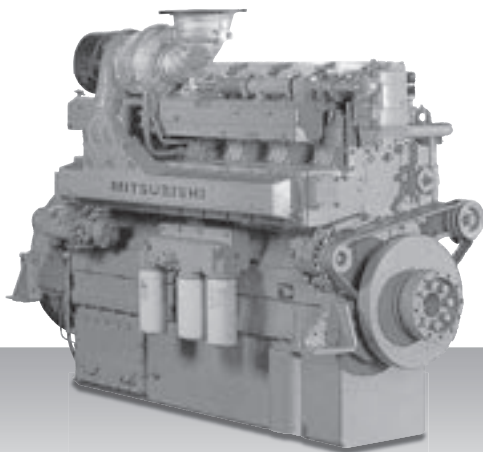
Specifications/data subject to change without prior notice.

Product Dimensions & Dry Weight

L (mm) : 1,811
W (mm) : 1,108
H (mm) : 1,614
Dry Weight (kg) : 2,780

Dimensions and Weight are based on standard configuration.

S6R-MPTK



6-cylinder, 4-cycle, Water cooled, Diesel Engine
Direct-injection, Turbocharged with Air-cooler

Bore x Stroke (mm) : 170 × 180
Displacement (L) : 24.51

Commercial Rating

kW	BHP	RPM	Fuel Cons. L/hr	Rating	Emissions
470	630	1,600	79.0	HD	IM01
520	697	1,650	87.9	MD	IM01
605	811	1,800	101.3	LD	IM01

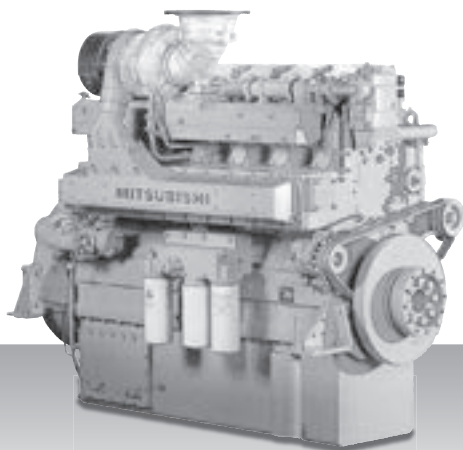
Specifications/data subject to change without prior notice.

Product Dimensions & Dry Weight

L (mm) : 1,811
W (mm) : 1,108
H (mm) : 1,614
Dry Weight (kg) : 2,830

Dimensions and Weight are based on standard configuration.

S6R-(Z3)MPTAW



6-cylinder, 4-cycle, Water cooled, Diesel Engine
Direct-injection, Turbocharged with Air-cooler

Bore x Stroke (mm) : 170 × 180
Displacement (L) : 24.51

Commercial Rating

kW	BHP	RPM	Fuel Cons. L/hr	Rating	Emissions
470	630	1,600	80.5	HD	IMO2/EU
520	697	1,650	89.0	MD	IMO2
605	811	1,800	t.b.c.	LD	IMO2/EU

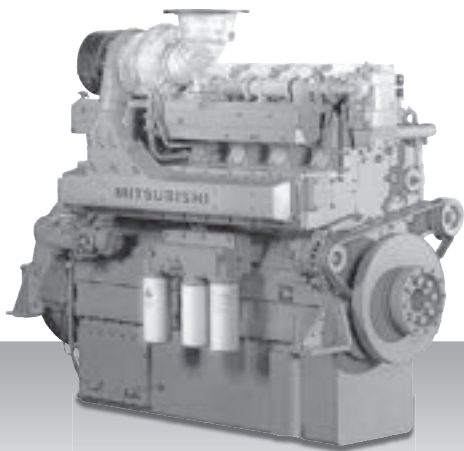
Specifications/data subject to change without prior notice.

Product Dimensions & Dry Weight

L (mm) : 1,779
W (mm) : 1,145
H (mm) : 1,614
Dry Weight (kg) : 2,830

Dimensions and Weight are based on standard configuration.

S6R2-MPTA



6-cylinder, 4-cycle, Water cooled, Diesel Engine
Direct-injection, Turbocharged with Air-cooler

Bore x Stroke (mm) : 170 × 220
Displacement (L) : 29.96

Commercial Rating

kW	BHP	RPM	Fuel Cons. L/hr	Rating	Emissions
445	597	1,350	75.9	HD	IM01
490	657	1,400	81.0	MD	IM01
565	757	1,500	97.5	LD	IM01

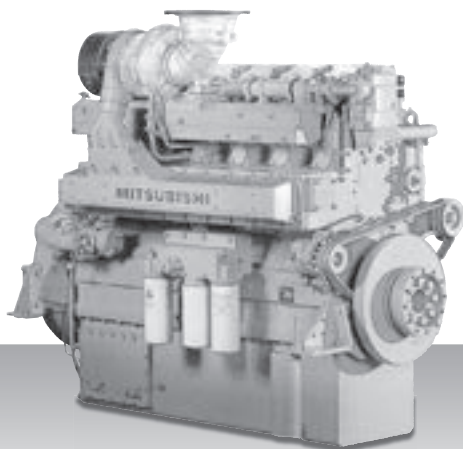
Specifications/data subject to change without prior notice.

Product Dimensions & Dry Weight

L (mm) : 1,811
W (mm) : 1,108
H (mm) : 1,694
Dry Weight (kg) : 2,910

Dimensions and Weight are based on standard configuration.

S6R2-MPTK



6-cylinder, 4-cycle, Water cooled, Diesel Engine
Direct-injection, Turbocharged with Air-cooler

Bore x Stroke (mm) : 170 × 220
Displacement (L) : 29.96

Commercial Rating

kW	BHP	RPM	Fuel Cons. L/hr	Rating	Emissions
480	643	1,350	78.9	HD	IM01
530	710	1,400	86.6	MD	IM01
610	818	1,500	100.4	LD	IM01

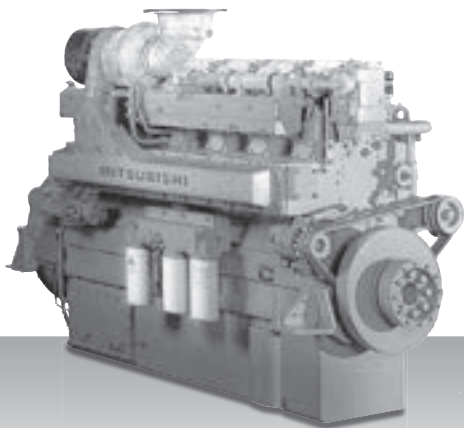
Specifications/data subject to change without prior notice.

Product Dimensions & Dry Weight

L (mm) : 1,811
W (mm) : 1,108
H (mm) : 1,694
Dry Weight (kg) : 2,960

Dimensions and Weight are based on standard configuration.

S6R2-T2MPTK



6-cylinder, 4-cycle, Water cooled, Diesel Engine
Direct-injection, Turbocharged with Air-cooler

Bore x Stroke (mm) : 170 × 220
Displacement (L) : 29.96

Commercial Rating

kW	BHP	RPM	Fuel Cons. L/hr	Rating	Emissions
480	643	1,350	79.9	HD	IM02
610	818	1,500	101.5	LD	IM02

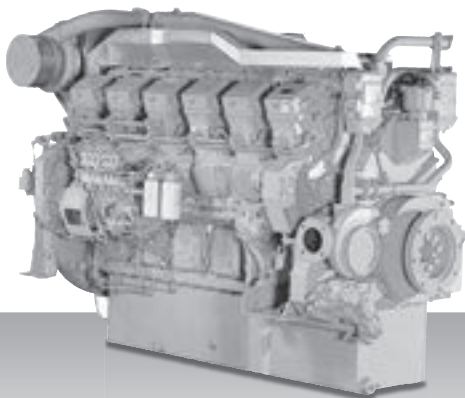
Specifications/data subject to change without prior notice.

Product Dimensions & Dry Weight

L (mm) : 1,811
W (mm) : 1,108
H (mm) : 1,694
Dry Weight (kg) : 2,960

Dimensions and Weight are based on standard configuration.

S12R-MPTA



12-cylinder, 4-cycle, Water cooled, Diesel Engine
Direct-injection, Turbocharged with Air-cooler

Bore x Stroke (mm) : 170 × 180
Displacement (L) : 49.03

Commercial Rating

kW	BHP	RPM	Fuel Cons. L/hr	Rating	Emissions
880	1,180	1,600	153.3	HD	IM01
970	1,300	1,650	165.9	MD	IM01
1,140	1,528	1,800	193.9	LD	IM01

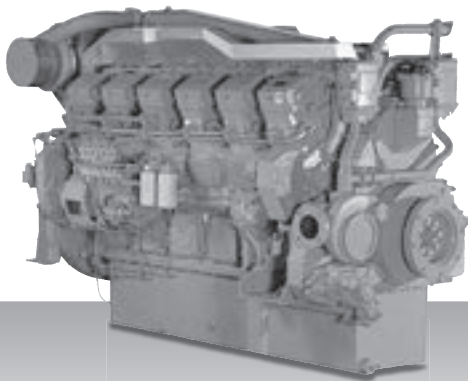
Specifications/data subject to change without prior notice.

Product Dimensions & Dry Weight

L (mm) : 2,376
W (mm) : 1,512
H (mm) : 1,742
Dry Weight (kg) : 5,230

Dimensions and Weight are based on standard configuration.

S12R-MPTK



12-cylinder, 4-cycle, Water cooled, Diesel Engine
Direct-injection, Turbocharged with Air-cooler

Bore x Stroke (mm) : 170 × 180
Displacement (L) : 49.03

Commercial Rating

kW	BHP	RPM	Fuel Cons. L/hr	Rating	Emissions
940	1,260	1,600	158.0	HD	IM01
1,040	1,394	1,650	176.5	MD	IM01
1,210	1,622	1,800	202.9	LD	IM01

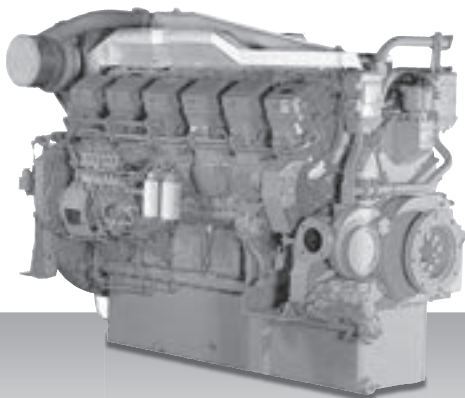
Specifications/data subject to change without prior notice.

Product Dimensions & Dry Weight

L (mm) : 2,376
W (mm) : 1,512
H (mm) : 1,731
Dry Weight (kg) : 5,320

Dimensions and Weight are based on standard configuration.

S12R-(Z3)MPTAW



12-cylinder, 4-cycle, Water cooled, Diesel Engine
Direct-injection, Turbocharged with Air-cooler

Bore x Stroke (mm) : 170 × 180
Displacement (L) : 49.03

Commercial Rating

kW	BHP	RPM	Fuel Cons. L/hr	Rating	Emissions
940	1,260	1,600	160.5	HD	IMO2/EU
1,040	1,394	1,650	178.7	MD	IMO2

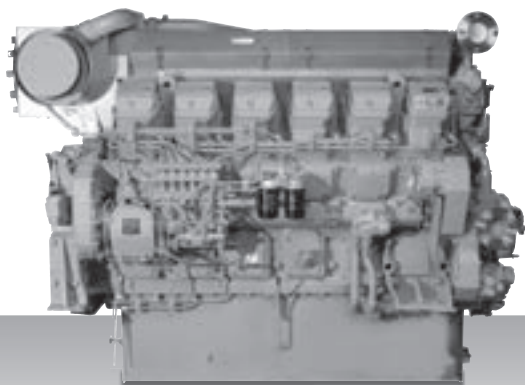
Specifications/data subject to change without prior notice.

Product Dimensions & Dry Weight

L (mm) : 2,416
W (mm) : 1,512
H (mm) : 1,742
Dry Weight (kg) : 5,320

Dimensions and Weight are based on standard configuration.

S12R-C2MPTK



12-cylinder, 4-cycle, Water cooled, Diesel Engine
Direct-injection, Turbocharged with Air-cooler

Bore x Stroke (mm) : 170 × 180
Displacement (L) : 49.03

Commercial Rating

kW	BHP	RPM	Fuel Cons. L/hr	Rating	Emissions
940	1,260	1,600	165.5	HD	CCNR2

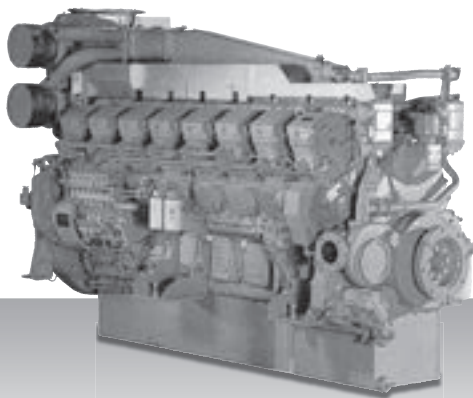
Specifications/data subject to change without prior notice.

Product Dimensions & Dry Weight

L (mm) : 2,376
W (mm) : 1,512
H (mm) : 1,742
Dry Weight (kg) : 5,320

Dimensions and Weight are based on standard configuration.

S16R-MPTA



16-cylinder, 4-cycle, Water cooled, Diesel Engine
Direct-injection, Turbocharged with Air-cooler

Bore x Stroke (mm) : 170 × 180
Displacement (L) : 65.37

Commercial Rating

kW	BHP	RPM	Fuel Cons. L/hr	Rating	Emissions
1,170	1,568	1,600	199.0	HD	IM01
1,290	1,729	1,650	210.5	MD	IM01
1,520	2,038	1,800	253.3	LD	IM01

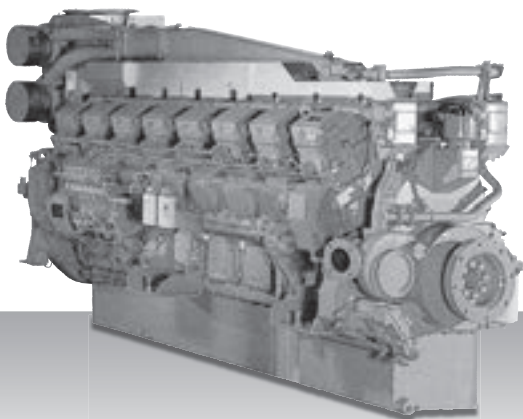
Specifications/data subject to change without prior notice.

Product Dimensions & Dry Weight

L (mm) : 2,931
W (mm) : 1,512
H (mm) : 1,960
Dry Weight (kg) : 6,660

Dimensions and Weight are based on standard configuration.

S16R-MPTK



16-cylinder, 4-cycle, Water cooled, Diesel Engine
Direct-injection, Turbocharged with Air-cooler

Bore x Stroke (mm) : 170 × 180
Displacement (L) : 65.37

Commercial Rating

kW	BHP	RPM	Fuel Cons. L/hr	Rating	Emissions
1,250	1,676	1,600	206.0	HD	IM01
1,380	1,850	1,650	234.4	MD	IM01
1,610	2,158	1,800	268.7	LD	IM01

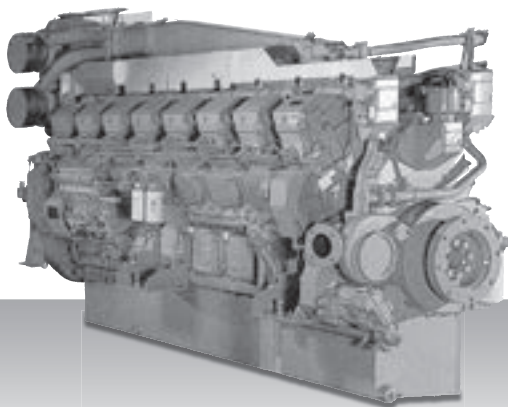
Specifications/data subject to change without prior notice.

Product Dimensions & Dry Weight

L (mm) : 2,931
W (mm) : 1,512
H (mm) : 1,960
Dry Weight (kg) : 6,780

Dimensions and Weight are based on standard configuration.

S16R-(Z3)MPTAW



16-cylinder, 4-cycle, Water cooled, Diesel Engine
Direct-injection, Turbocharged with Air-cooler

Bore x Stroke (mm) : 170 × 180
Displacement (L) : 65.37

Commercial Rating

kW	BHP	RPM	Fuel Cons. L/hr	Rating	Emissions
1,250	1,676	1,600	214.1	HD	IMO2/EU
1,380	1,850	1,650	236.6	MD	IMO2

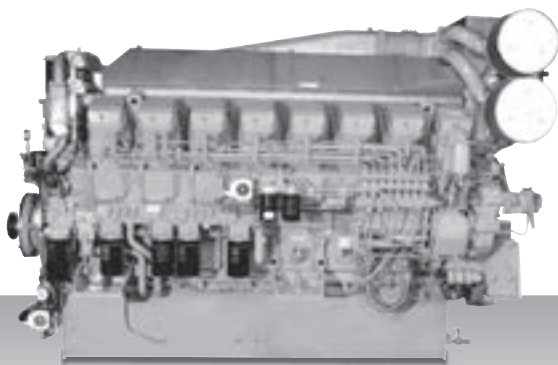
Specifications/data subject to change without prior notice.

Product Dimensions & Dry Weight

L (mm) : 2,971
W (mm) : 1,512
H (mm) : 1,960
Dry Weight (kg) : 6,780

Dimensions and Weight are based on standard configuration.

S16R-C2MPTK



16-cylinder, 4-cycle, Water cooled, Diesel Engine
Direct-injection, Turbocharged with Air-cooler

Bore x Stroke (mm) : 170 × 180
Displacement (L) : 65.37

Commercial Rating

kW	BHP	RPM	Fuel Cons. L/hr	Rating	Emissions
1,250	1,676	1,600	216.3	HD	CCNR2

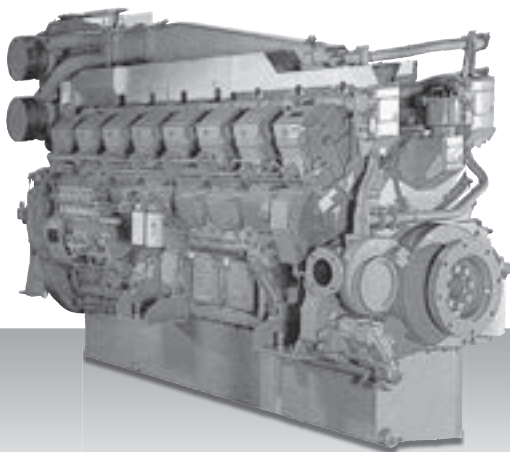
Specifications/data subject to change without prior notice.

Product Dimensions & Dry Weight

L (mm) : 2,930
W (mm) : 1,512
H (mm) : 1,960
Dry Weight (kg) : 6,780

Dimensions and Weight are based on standard configuration.

S16R2-T2MPTAW



16-cylinder, 4-cycle, Water cooled, Diesel Engine
Direct-injection, Turbocharged with Air-cooler

Bore x Stroke (mm): 170 × 220
Displacement (L): 79.9

Commercial Rating

kW	BHP	RPM	Fuel Cons. L/hr	Rating	Emissions
1,450	1,944	1,350	t.b.c.	HD	IM02
1,600	2,146	1,400	t.b.c.	MD	IM02
1,885	2,528	1,500	t.b.c.	LD	IM02

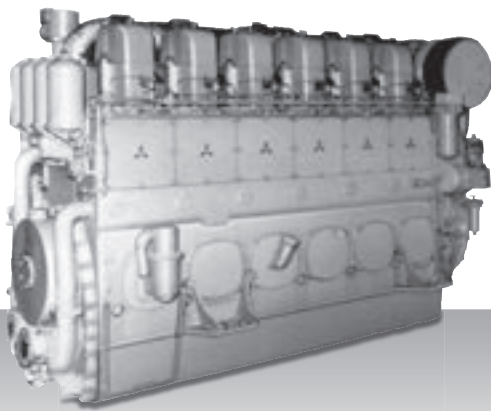
Specifications/data subject to change without prior notice.

Product Dimensions & Dry Weight

L (mm) : 2,946
W (mm) : 1,525
H (mm): : 2,030
Dry Weight (kg) : 7,750

Dimensions and Weight are based on standard configuration.

S6U-(C2)MPTK



6-cylinder, 4-cycle, Water cooled, Diesel Engine
Direct-injection, Turbocharged with Air-cooler

Bore x Stroke (mm) : 240 × 260
Displacement (L) : 70.57

Commercial Rating

kW	BHP	RPM	Fuel Cons. g/kWh	Rating	Emissions
1,007	1,350	1,060	200	HD	IMO2/CCNR2
1,119	1,500	1,100	200	MD	IMO2/CCNR2
1,103	1,478	1,150	200	HT	IMO2

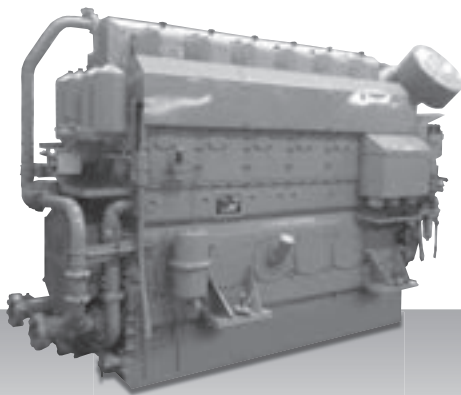
Specifications/data subject to change without prior notice.

Product Dimensions & Dry Weight

L (mm) : 3,211
W (mm) : 1,429
H (mm) : 2,104
Dry Weight (kg) : 8,400

Dimensions and Weight are based on standard configuration.

S6U2-MPTK



6-cylinder, 4-cycle, Water cooled, Diesel Engine
Direct-injection, Turbocharged with Air-cooler

Bore x Stroke (mm) : 240 × 300
Displacement (L) : 81.43

Commercial Rating

kW	BHP	RPM	Fuel Cons. g/kWh	Rating	Emissions
1,040	1,394	930	194	HD	IMO2/CCNR2
1,156	1,550	960	194	MD	IMO2

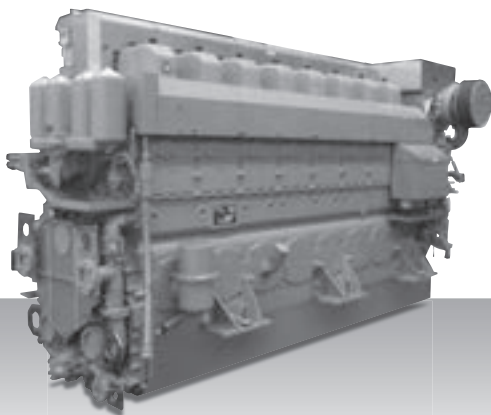
Specifications/data subject to change without prior notice.

Product Dimensions & Dry Weight

L (mm) : 3,226
W (mm) : 1,429
H (mm) : 2,177
Dry Weight (kg) : 8,600

Dimensions and Weight are based on standard configuration.

S8U-(C2)MPTK



8-cylinder, 4-cycle, Water cooled, Diesel Engine
Direct-injection, Turbocharged with Air-cooler

Bore x Stroke (mm) : 240 × 260
Displacement (L) : 94.10

Commercial Rating

kW	BHP	RPM	Fuel Cons. g/kWh	Rating	Emissions
1,343	1,800	1,060	204	HD	IMO2/CCNR2
1,492	2,000	1,100	204	MD	IMO2/CCNR2
1,470	1,970	1,150	204	HT	IMO2

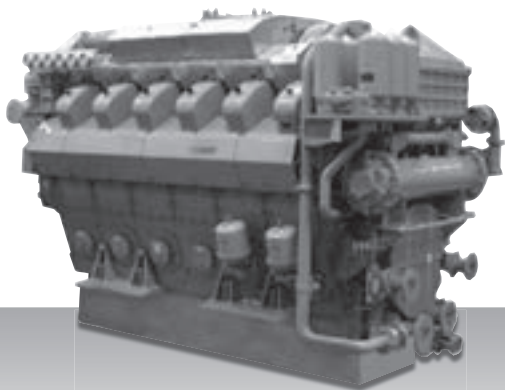
Specifications/data subject to change without prior notice.

Product Dimensions & Dry Weight

L (mm) : 4,065
W (mm) : 1,539
H (mm) : 2,192
Dry Weight (kg) : 11,000

Dimensions and Weight are based on standard configuration.

S12U-MPTK



12-cylinder, 4-cycle, Water cooled, Diesel Engine
Direct-injection, Turbocharged with Air-cooler

Bore x Stroke (mm) : 240 × 260
Displacement (L) : 141.15

Commercial Rating

kW	BHP	RPM	Fuel Cons. g/kWh	Rating	Emissions
2,014	2,700	1,060	200	HD	IM02
2,238	3,000	1,100	200	MD	IM02
2,205	2,955	1,150	200	HT	IM02

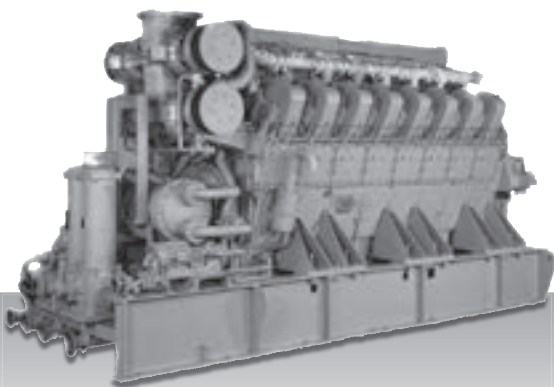
Specifications/data subject to change without prior notice.

Product Dimensions & Dry Weight

L (mm) : 3,562
W (mm) : 1,910
H (mm) : 2,374
Dry Weight (kg) : 16,600

Dimensions and Weight are based on standard configuration.

S16U-MPTK



16-cylinder, 4-cycle, Water cooled, Diesel Engine
Direct-injection, Turbocharged with Air-cooler

Bore x Stroke (mm) : 240 x 260
Displacement (L) : 188.19

Commercial Rating

kW	BHP	RPM	Fuel Cons. g/kWh	Rating	Emissions
2,686	3,600	1,060	204	HD	IMO2
2,984	4,000	1,100	204	MD	IMO2
2,940	3,940	1,150	204	HT	IMO2

Specifications/data subject to change without prior notice.

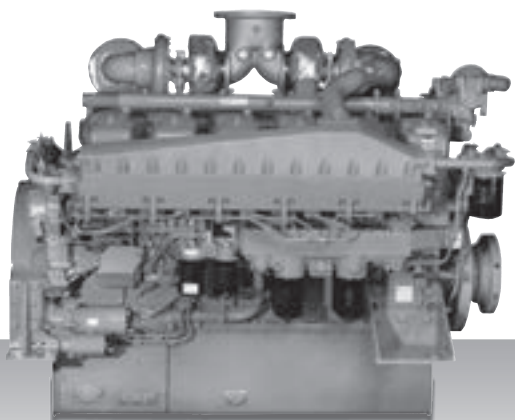
Product Dimensions & Dry Weight

L (mm) : 4,628
W (mm) : 1,710
H (mm) : 2,473
Dry Weight (kg) : 20,500

Dimensions and Weight are based on standard configuration.

Diesel-Electric Propulsion Specifications

S12A2-(Z3)MPTAW



12-cylinder, 4-cycle, Water cooled, Diesel Engine
Direct-injection, Turbocharged with Air-cooler

Bore x Stroke (mm) : 150 × 160
Displacement (L) : 33.93

Commercial Rating

kW	BHP	RPM	Fuel Cons. L/hr	Rating	Emissions
709	950	1,500	85.0	50Hz	IMO2
752	1,008	1,800	t.b.c.	60Hz	IMO2

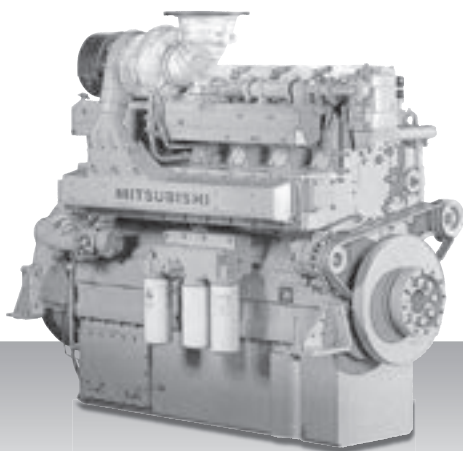
Specifications/data subject to change without prior notice.

Product Dimensions & Dry Weight

L (mm) : 1,948
W (mm) : 1,654
H (mm) : 1,596
Dry Weight (kg) : 3,380

Dimensions and Weight are based on standard configuration.

S6R-(Z3)MPTAW



6-cylinder, 4-cycle, Water cooled, Diesel Engine
Direct-injection, Turbocharged with Air-cooler

Bore x Stroke (mm) : 170 x 180
Displacement (L) : 24.51

Commercial Rating

kW	BHP	RPM	Fuel Cons. L/hr	Rating	Emissions
545	731	1,500	65.1	50Hz	IMO2
577	773	1,800	t.b.c.	60Hz	IMO2

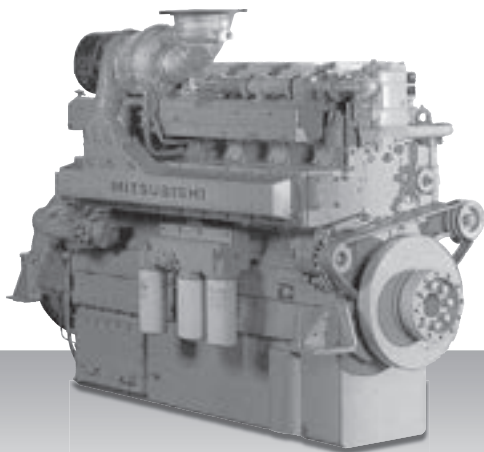
Specifications/data subject to change without prior notice.

Product Dimensions & Dry Weight

L (mm) : 1,779
W (mm) : 1,145
H (mm) : 1,614
Dry Weight (kg) : 2,830

Dimensions and Weight are based on standard configuration.

S6R2-T2MPTK



6-cylinder, 4-cycle, Water cooled, Diesel Engine
Direct-injection, Turbocharged with Air-cooler

Bore x Stroke (mm) : 170 × 220
Displacement (L) : 29.96

Commercial Rating

kW	BHP	RPM	Fuel Cons. L/hr	Rating	Emissions
500	670	1,200	58.6	60Hz	IMO2
640	858	1,500	78.4	50Hz	IMO2

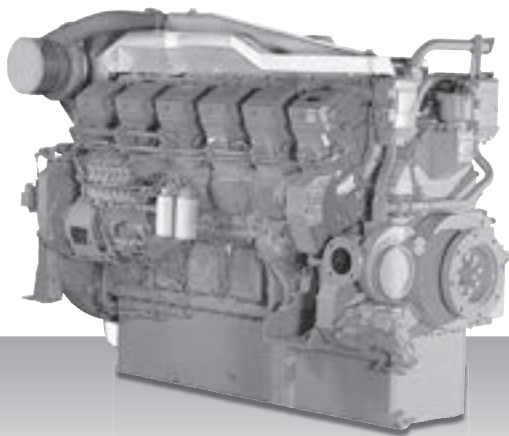
Specifications/data subject to change without prior notice.

Product Dimensions & Dry Weight

L (mm) : 1,811
W (mm) : 1,108
H (mm) : 1,694
Dry Weight (kg) : 2,960

Dimensions and Weight are based on standard configuration.

S12R-(Z3)MPTAW



12-cylinder, 4-cycle, Water cooled, Diesel Engine
Direct-injection, Turbocharged with Air-cooler
Mechanical governor

Bore x Stroke (mm) : 170 × 180
Displacement (L) : 49.03

Commercial Rating

kW	BHP	RPM	Fuel Cons. L/hr	Rating	Emissions
840	1,126	1,200	95.6	60Hz	IM02
1,120	1,501	1,500	134.0	50Hz	IM02
1,154	1,574	1,800	t.b.c.	60Hz	IM02

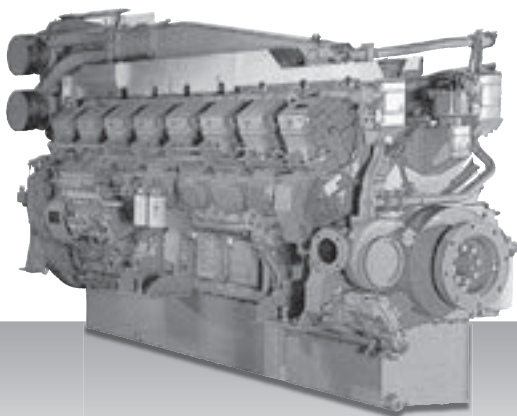
Specifications/data subject to change without prior notice.

Product Dimensions & Dry Weight

L (mm) : 2,416
W (mm) : 1,512
H (mm) : 1,742
Dry Weight (kg) : 5,320

Dimensions and Weight are based on standard configuration.

S16R-(Z3)MPTAW



16-cylinder, 4-cycle, Water cooled, Diesel Engine
Direct-injection, Turbocharged with Air-cooler

Bore x Stroke (mm) : 170 × 180
Displacement (L) : 65.37

Commercial Rating

kW	BHP	RPM	Fuel Cons. L/hr	Rating	Emissions
1,120	1,501	1,200	t.b.c	60Hz	IMO2
1,500	2,011	1,500	182.6	50Hz	IMO2
1,536	2,059	1,800	t.b.c.	60Hz	IMO2

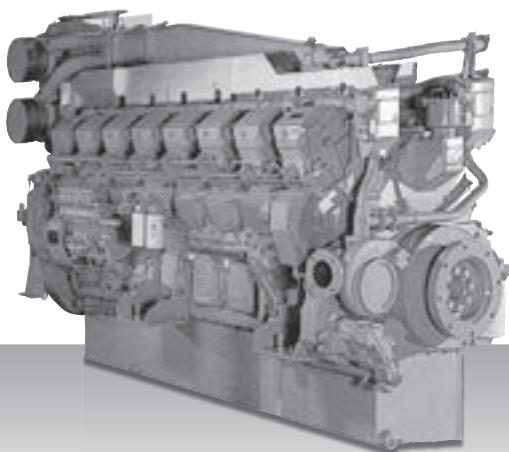
Specifications/data subject to change without prior notice.

Product Dimensions & Dry Weight

L (mm) : 2,971
W (mm) : 1,512
H (mm) : 1,960
Dry Weight (kg) : 6,780

Dimensions and Weight are based on standard configuration.

S16R2-T2MPTAW



16-cylinder, 4-cycle, Water cooled, Diesel Engine
Direct-injection, Turbocharged with Air-cooler

Bore x Stroke (mm): 170 × 220
Displacement (L): 79.9

Commercial Rating

kW	BHP	RPM	Fuel Cons. L/hr	Rating	Emissions
1,568	2,103	1,200	t.b.c.	60Hz	IM02
1,960	2,628	1,500	t.b.c.	50Hz	IM02

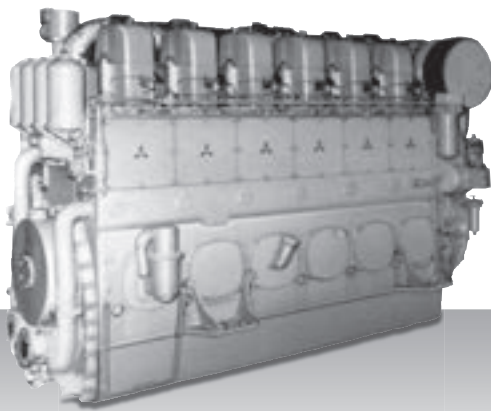
Specifications/data subject to change without prior notice.

Product Dimensions & Dry Weight

L (mm) : 2,946
W (mm) : 1,525
H (mm) : 2,030
Dry Weight (kg) : 7,750

Dimensions and Weight are based on standard configuration.

S6U-MPTK



6-cylinder, 4-cycle, Water cooled, Diesel Engine
Direct-injection, Turbocharged with Air-cooler

Bore x Stroke (mm) : 240 × 260

Displacement (L) : 70.57

Commercial Rating

Operation	kW	BHP	RPM	Rating	Emissions
Continuous	1,045	1,401	900	60Hz	IMO2
	1,142	1,531	1,000	50Hz	IMO2
	1,205	1,615	1,200	60Hz	IMO2
Intermittent	1,150	1,543	900	60Hz	IMO2
	1,270	1,704	1,000	50Hz	IMO2
	1,343	1,802	1,200	60Hz	IMO2

Specifications/data subject to change without prior notice.

Product Dimensions & Dry Weight

L (mm) : 3,211

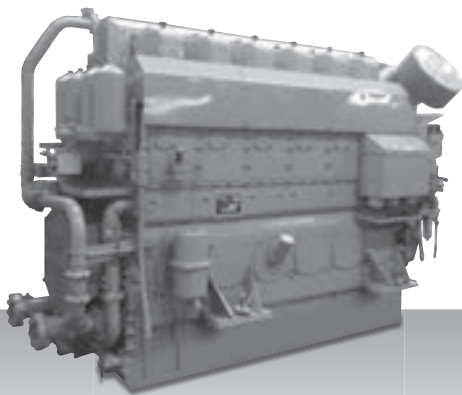
W (mm) : 1,429

H (mm) : 2,104

Dry Weight (kg) : 8,400

Dimensions and Weight are based on standard configuration.

S6U2-MPTK



6-cylinder, 4-cycle, Water cooled, Diesel Engine
Direct-injection, Turbocharged with Air-cooler

Bore x Stroke (mm) : 240 × 300

Displacement (L) : 81.43

Commercial Rating

Operation	kW	BHP	RPM	Rating	Emissions
Continuous	1,161	1,556	900	60Hz	IMO2
	1,234	1,654	1,000	50Hz	IMO2
Intermittent	1,250	1,678	900	60Hz	IMO2
	1,363	1,829	1,000	50Hz	IMO2

Specifications/data subject to change without prior notice.

Product Dimensions & Dry Weight

L (mm) : 3,226

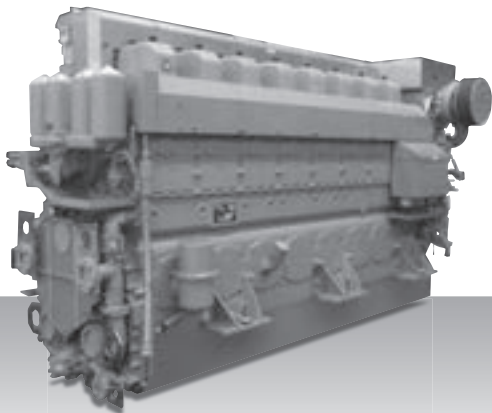
W (mm) : 1,429

H (mm) : 2,177

Dry Weight (kg) : 8,600

Dimensions and Weight are based on standard configuration.

S8U-MPTK



8-cylinder, 4-cycle, Water cooled, Diesel Engine
Direct-injection, Turbocharged with Air-cooler

Bore x Stroke (mm) : 240 × 260

Displacement (L) : 94.10

Commercial Rating

Operation	kW	BHP	RPM	Rating	Emissions
Continuous	1,394	1,868	900	60Hz	IMO2
	1,522	2,040	1,000	50Hz	IMO2
	1,608	2,155	1,200	60Hz	IMO2
Intermittent	1,533	2,057	900	60Hz	IMO2
	1,693	2,272	1,000	50Hz	IMO2
	1,790	2,402	1,200	60Hz	IMO2

Specifications/data subject to change without prior notice.

Product Dimensions & Dry Weight

L (mm) : 4,065

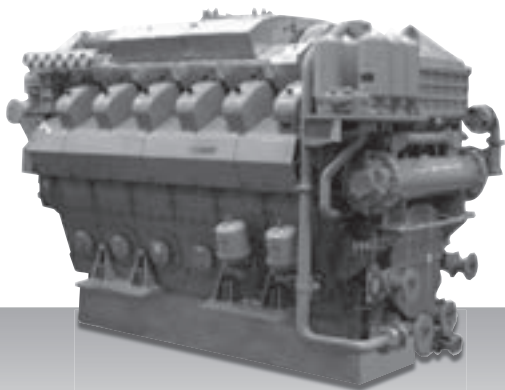
W (mm) : 1,539

H (mm) : 2,192

Dry Weight (kg) : 11,000

Dimensions and Weight are based on standard configuration.

S12U-MPTK



12-cylinder, 4-cycle, Water cooled, Diesel Engine
Direct-injection, Turbocharged with Air-cooler

Bore x Stroke (mm) : 240 × 260

Displacement (L) : 141.15

Commercial Rating

Operation	kW	BHP	RPM	Rating	Emissions
Continuous	2,090	2,801	900	60Hz	IM02
	2,283	3,060	1,000	50Hz	IM02
	2,412	3,233	1,200	60Hz	IM02
Intermittent	2,299	3,085	900	60Hz	IM02
	2,541	3,410	1,000	50Hz	IM02
	2,685	3,603	1,200	60Hz	IM02

Specifications/data subject to change without prior notice.

Product Dimensions & Dry Weight

L (mm) : 3,562

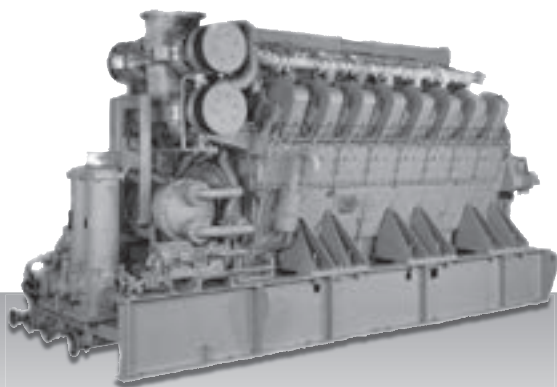
W (mm) : 1,910

H (mm) : 2,374

Dry Weight (kg) : 16,600

Dimensions and Weight are based on standard configuration.

S16U-MPTK



16-cylinder, 4-cycle, Water cooled, Diesel Engine
Direct-injection, Turbocharged with Air-cooler

Bore x Stroke (mm) : 240 x 260

Displacement (L) : 188.19

Commercial Rating

Operation	kW	BHP	RPM	Rating	Emissions
Continuous	2,787	3,735	900	60Hz	IM02
	3,045	4,081	1,000	50Hz	IM02
	3,215	4,309	1,200	60Hz	IM02
Intermittent	3,065	4,113	900	60Hz	IM02
	3,388	4,547	1,000	50Hz	IM02
	3,580	4,804	1,200	60Hz	IM02

Specifications/data subject to change without prior notice.

Product Dimensions & Dry Weight

L (mm) : 4,628

W (mm) : 1,710

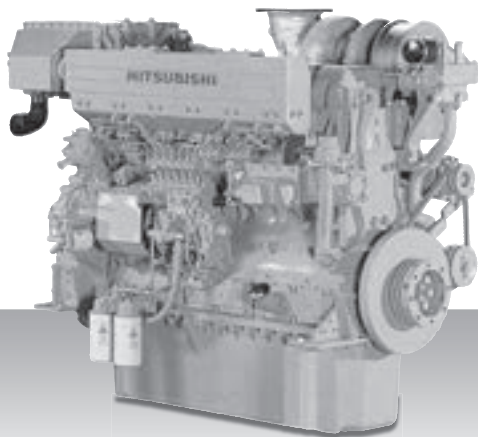
H (mm) : 2,473

Dry Weight (kg) : 20,500

Dimensions and Weight are based on standard configuration.

Auxiliary Generator Specifications

S6B3-T2MPTAW



6-cylinder, 4-cycle, Water cooled, Diesel Engine
Direct-injection, Turbocharged with Air-cooler

Bore x Stroke (mm) : 135 × 170
Displacement (L) : 14.60

Commercial Rating

kW	BHP	RPM	Fuel Cons. L/hr	Rating	Emissions
335	450	1,500	t.b.c.	50Hz	IM02
375	503	1,800	t.b.c.	60Hz	IM02

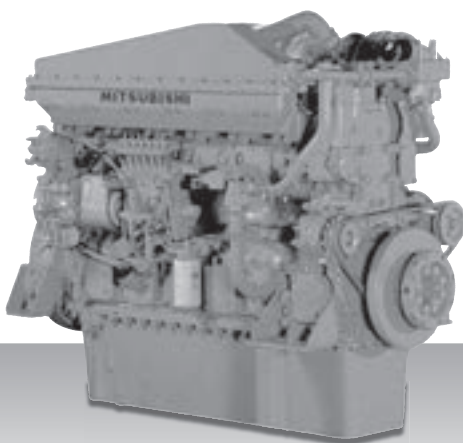
Specifications/data subject to change without prior notice.

Product Dimensions & Dry Weight

L (mm) : 1,465
W (mm) : 873
H (mm) : 1,331
Dry Weight (kg) : 1,300

Dimensions and Weight are based on standard configuration.

S6A3-MPTA



6-cylinder, 4-cycle, Water cooled, Diesel Engine
Direct-injection, Turbocharged with Air-cooler

Bore x Stroke (mm) : 150 × 175
Displacement (L) : 18.56

Commercial Rating

kW	BHP	RPM	Fuel Cons. L/hr	Rating	Emissions
400	536	1,500	49.4	50Hz	IM01
460	617	1,800	57.8	60Hz	IM01

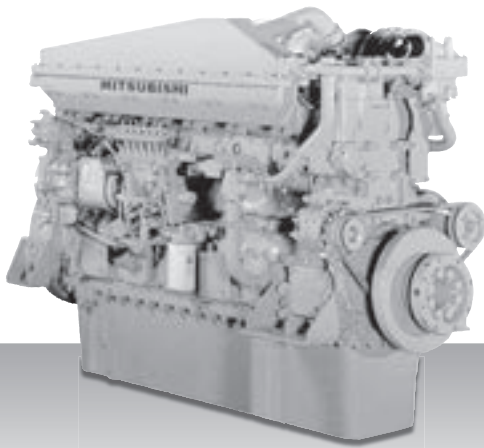
Specifications/data subject to change without prior notice.

Product Dimensions & Dry Weight

L (mm) : 1,636
W (mm) : 924
H (mm) : 1,421
Dry Weight (kg) : 1,850

Dimensions and Weight are based on standard configuration.

S6A3-MPTK



6-cylinder, 4-cycle, Water cooled, Diesel Engine
Direct-injection, Turbocharged with Air-cooler

Bore x Stroke (mm) : 150 × 175
Displacement (L) : 18.56

Commercial Rating

kW	BHP	RPM	Fuel Cons. L/hr	Rating	Emissions
430	576	1,500	54.2	50Hz	IM01

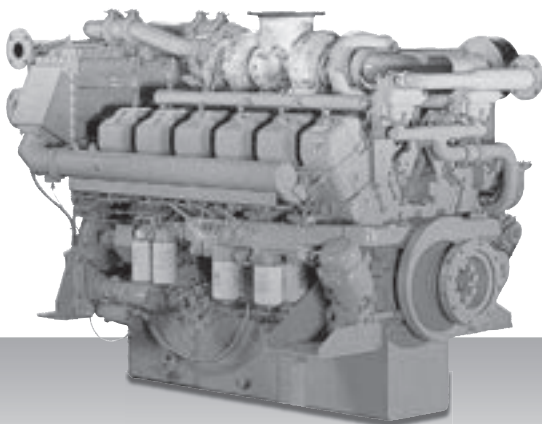
Specifications/data subject to change without prior notice.

Product Dimensions & Dry Weight

L (mm) : 2,037
W (mm) : 927
H (mm) : 1,371
Dry Weight (kg) : 1,900

Dimensions and Weight are based on standard configuration.

S12A2-MPTA



12-cylinder, 4-cycle, Water cooled, Diesel Engine
Direct-injection, Turbocharged with Air-cooler

Bore x Stroke (mm) : 150 × 160
Displacement (L) : 33.93

Commercial Rating

kW	BHP	RPM	Fuel Cons. L/hr	Rating	Emissions
679	910	1,500	83.0	50Hz	IM01
761	1,020	1,800	97.5	60Hz	IM01

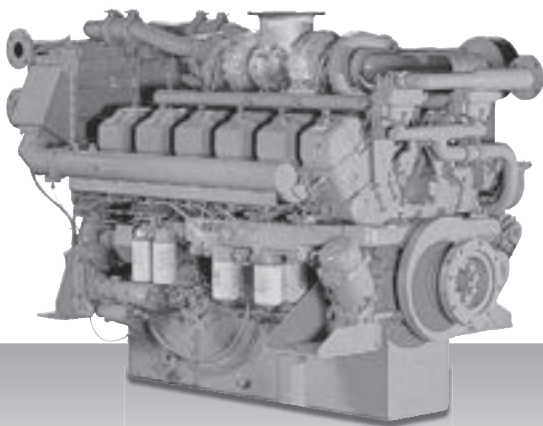
Specifications/data subject to change without prior notice.

Product Dimensions & Dry Weight

L (mm) : 2,002
W (mm) : 1,442
H (mm) : 1,596
Dry Weight (kg) : 3,380

Dimensions and Weight are based on standard configuration.

S12A2-MPTK



12-cylinder, 4-cycle, Water cooled, Diesel Engine
Direct-injection, Turbocharged with Air-cooler

Bore x Stroke (mm) : 150 × 160
Displacement (L) : 33.93

Commercial Rating

kW	BHP	RPM	Fuel Cons. L/hr	Rating	Emissions
709	950	1,500	86.1	50Hz	IM01
828	1,110	1,800	104.0	60Hz	IM01

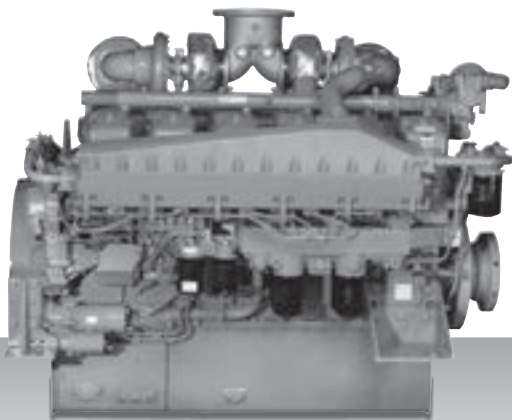
Specifications/data subject to change without prior notice.

Product Dimensions & Dry Weight

L (mm) : 2,291
W (mm) : 1,418
H (mm) : 1,596
Dry Weight (kg) : 3,720

Dimensions and Weight are based on standard configuration.

S12A2-(Z3)MPTAW



12-cylinder, 4-cycle, Water cooled, Diesel Engine
Direct-injection, Turbocharged with Air-cooler

Bore x Stroke (mm) : 150 × 160
Displacement (L) : 33.93

Commercial Rating

kW	BHP	RPM	Fuel Cons. L/hr	Rating	Emissions
709	950	1,500	85.0	50Hz	IMO2
828	1,110	1,800	102.0	60Hz	IMO2

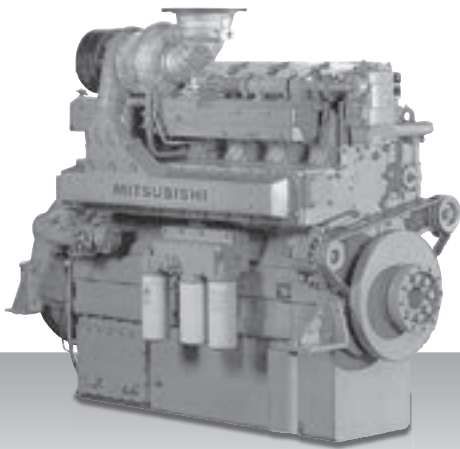
Specifications/data subject to change without prior notice.

Product Dimensions & Dry Weight

L (mm) : 1,948
W (mm) : 1,654
H (mm) : 1,596
Dry Weight (kg) : 3,380

Dimensions and Weight are based on standard configuration.

S6R-MPTA



6-cylinder, 4-cycle, Water cooled, Diesel Engine
Direct-injection, Turbocharged with Air-cooler

Bore x Stroke (mm) : 170 × 180
Displacement (L) : 24.51

Commercial Rating

kW	BHP	RPM	Fuel Cons. L/hr	Rating	Emissions
515	690	1,500	64.4	50Hz	IMO1
595	798	1,800	77.9	60Hz	IMO1

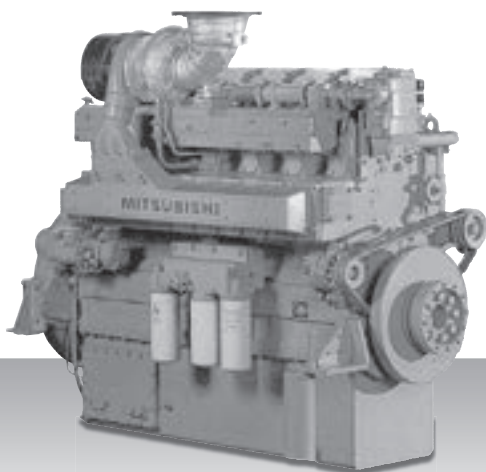
Specifications/data subject to change without prior notice.

Product Dimensions & Dry Weight

L (mm) : 1,811
W (mm) : 1,108
H (mm) : 1,614
Dry Weight (kg) : 2,780

Dimensions and Weight are based on standard configuration.

S6R-MPTK



6-cylinder, 4-cycle, Water cooled, Diesel Engine
Direct-injection, Turbocharged with Air-cooler

Bore x Stroke (mm) : 170 × 180
Displacement (L) : 24.51

Commercial Rating

kW	BHP	RPM	Fuel Cons. L/hr	Rating	Emissions
545	731	1,500	67.8	50Hz	IM01
635	851	1,800	80.3	60Hz	IM01

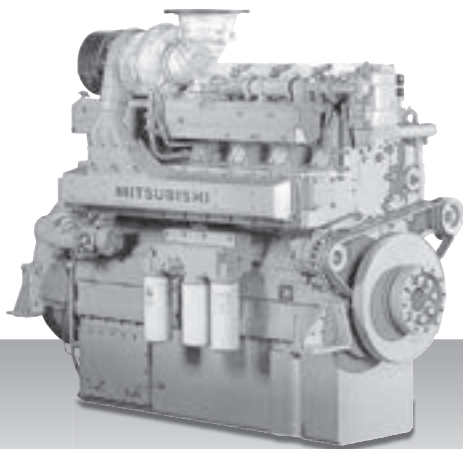
Specifications/data subject to change without prior notice.

Product Dimensions & Dry Weight

L (mm) : 1,811
W (mm) : 1,108
H (mm) : 1,614
Dry Weight (kg) : 2,830

Dimensions and Weight are based on standard configuration.

S6R-(Z3)MPTAW



6-cylinder, 4-cycle, Water cooled, Diesel Engine
Direct-injection, Turbocharged with Air-cooler

Bore x Stroke (mm) : 170 × 180
Displacement (L) : 24.51

Commercial Rating

kW	BHP	RPM	Fuel Cons. L/hr	Rating	Emissions
545	731	1,500	65.1	50Hz	IMO2
635	851	1,800	82.4	60Hz	IMO2/EU

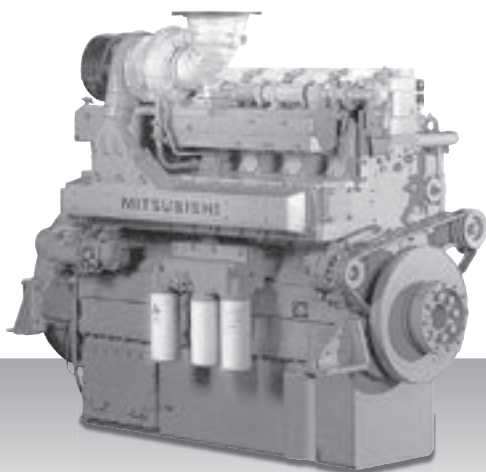
Specifications/data subject to change without prior notice.

Product Dimensions & Dry Weight

L (mm) : 1,779
W (mm) : 1,145
H (mm) : 1,614
Dry Weight (kg) : 2,830

Dimensions and Weight are based on standard configuration.

S6R2-MPTA



6-cylinder, 4-cycle, Water cooled, Diesel Engine
Direct-injection, Turbocharged with Air-cooler
Mechanical governor

Bore x Stroke (mm) : 170 × 220
Displacement (L) : 29.96

Commercial Rating

kW	BHP	RPM	Fuel Cons. L/hr	Rating	Emissions
485	650	1,200	57.9	60Hz	IM01
595	798	1,500	77.9	50Hz	IM01

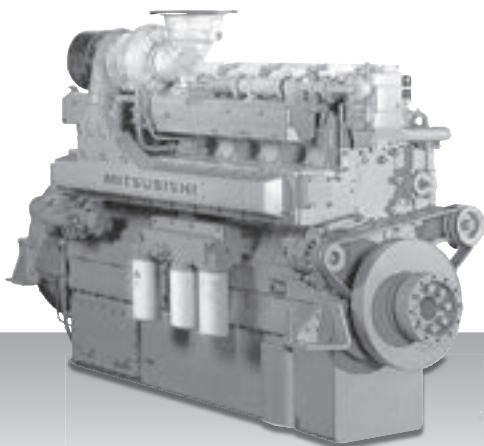
Specifications/data subject to change without prior notice.

Product Dimensions & Dry Weight

L (mm) : 1,811
W (mm) : 1,108
H (mm) : 1,694
Dry Weight (kg) : 2,910

Dimensions and Weight are based on standard configuration.

S6R2-MPTK



6-cylinder, 4-cycle, Water cooled, Diesel Engine
Direct-injection, Turbocharged with Air-cooler
Mechanical governor

Bore x Stroke (mm) : 170 × 220
Displacement (L) : 29.96

Commercial Rating

kW	BHP	RPM	Fuel Cons. L/hr	Rating	Emissions
500	670	1,200	58.0	60Hz	IM01
640	858	1,500	78.3	50Hz	IM01

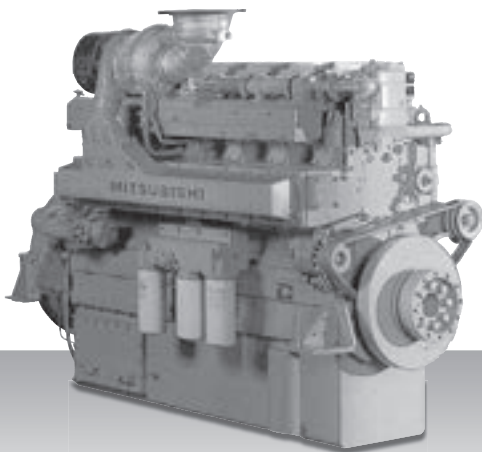
Specifications/data subject to change without prior notice.

Product Dimensions & Dry Weight

L (mm) : 1,811
W (mm) : 1,108
H (mm) : 1,694
Dry Weight (kg) : 2,960

Dimensions and Weight are based on standard configuration.

S6R2-T2MPTK



6-cylinder, 4-cycle, Water cooled, Diesel Engine
Direct-injection, Turbocharged with Air-cooler

Bore x Stroke (mm) : 170 × 220
Displacement (L) : 29.96

Commercial Rating

kW	BHP	RPM	Fuel Cons. L/hr	Rating	Emissions
500	670	1,200	58.6	60Hz	IMO2
640	858	1,500	78.4	50Hz	IMO2

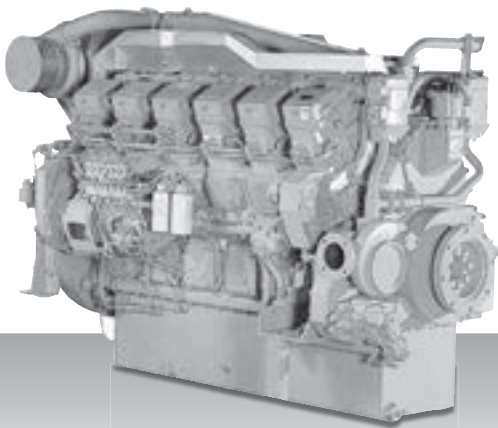
Specifications/data subject to change without prior notice.

Product Dimensions & Dry Weight

L (mm) : 1,811
W (mm) : 1,108
H (mm) : 1,694
Dry Weight (kg) : 2,960

Dimensions and Weight are based on standard configuration.

S12R-MPTA



12-cylinder, 4-cycle, Water cooled, Diesel Engine
Direct-injection, Turbocharged with Air-cooler

Bore x Stroke (mm) : 170 × 180
Displacement (L) : 49.03

Commercial Rating

kW	BHP	RPM	Fuel Cons. L/hr	Rating	Emissions
1,110	1,488	1,500	136.6	50Hz	IM01
1,190	1,595	1,800	155.2	60Hz	IM01

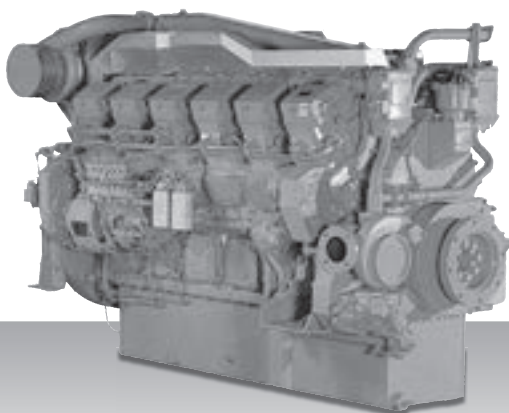
Specifications/data subject to change without prior notice.

Product Dimensions & Dry Weight

L (mm) : 2,376
W (mm) : 1,512
H (mm) : 1,742
Dry Weight (kg) : 5,230

Dimensions and Weight are based on standard configuration.

S12R-MPTK



12-cylinder, 4-cycle, Water cooled, Diesel Engine
Direct-injection, Turbocharged with Air-cooler
Mechanical governor

Bore x Stroke (mm) : 170 × 180
Displacement (L) : 49.03

Commercial Rating

kW	BHP	RPM	Fuel Cons. L/hr	Rating	Emissions
1,120	1,501	1,500	134.3	50Hz	IM01
1,270	1,702	1,800	158.1	60Hz	IM01

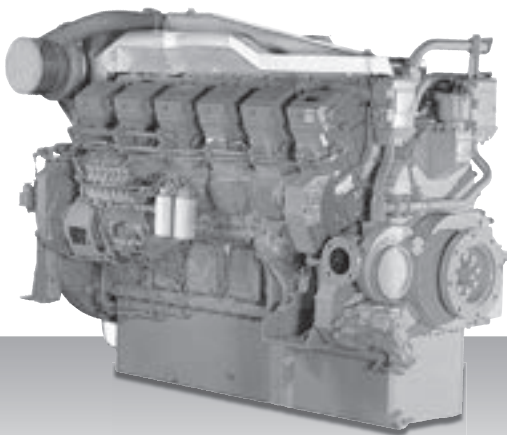
Specifications/data subject to change without prior notice.

Product Dimensions & Dry Weight

L (mm) : 2,376
W (mm) : 1,512
H (mm) : 1,731
Dry Weight (kg) : 5,320

Dimensions and Weight are based on standard configuration.

S12R-(Z3)MPTAW



12-cylinder, 4-cycle, Water cooled, Diesel Engine
Direct-injection, Turbocharged with Air-cooler
Mechanical governor

Bore x Stroke (mm) : 170 × 180
Displacement (L) : 49.03

Commercial Rating

kW	BHP	RPM	Fuel Cons. L/hr	Rating	Emissions
840	1,126	1,200	95.6	60Hz	IMO2
1,120	1,501	1,500	124.0	50Hz	IMO2
1,270	1,702	1,800	163.6	60Hz	IMO2

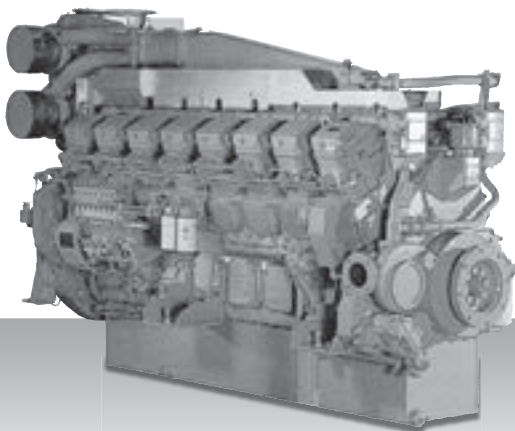
Specifications/data subject to change without prior notice.

Product Dimensions & Dry Weight

L (mm) : 2,416
W (mm) : 1,512
H (mm) : 1,742
Dry Weight (kg) : 5,320

Dimensions and Weight are based on standard configuration.

S16R-MPTA



16-cylinder, 4-cycle, Water cooled, Diesel Engine
Direct-injection, Turbocharged with Air-cooler

Bore x Stroke (mm) : 170 × 180
Displacement (L) : 65.37

Commercial Rating

kW	BHP	RPM	Fuel Cons. L/hr	Rating	Emissions
1,480	1,984	1,500	177.9	50Hz	IM01
1,590	2,131	1,800	200.9	60Hz	IM01

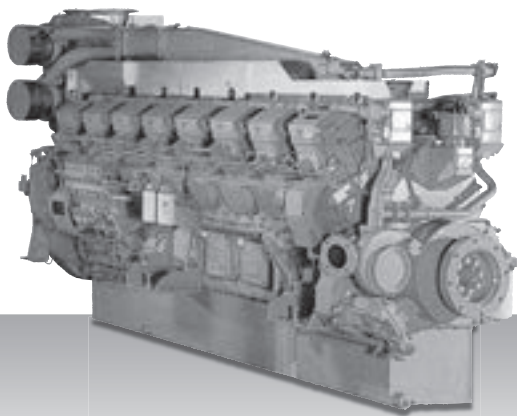
Specifications/data subject to change without prior notice.

Product Dimensions & Dry Weight

L (mm) : 2,931
W (mm) : 1,512
H (mm) : 1,960
Dry Weight (kg) : 6,660

Dimensions and Weight are based on standard configuration.

S16R-MPTK



16-cylinder, 4-cycle, Water cooled, Diesel Engine
Direct-injection, Turbocharged with Air-cooler

Bore x Stroke (mm) : 170 × 180
Displacement (L) : 65.37

Commercial Rating

kW	BHP	RPM	Fuel Cons. L/hr	Rating	Emissions
1,500	2,011	1,500	178.5	50Hz	IM01
1,690	2,265	1,800	206.6	60Hz	IM01

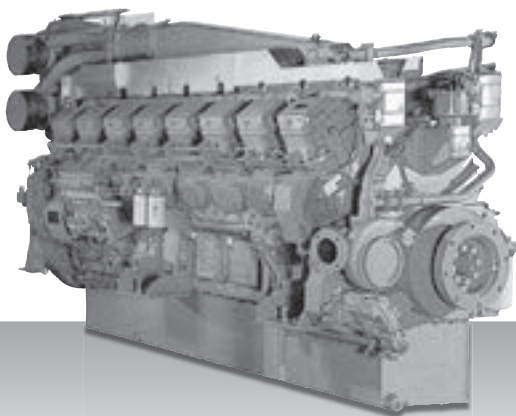
Specifications/data subject to change without prior notice.

Product Dimensions & Dry Weight

L (mm) : 2,931
W (mm) : 1,512
H (mm) : 1,960
Dry Weight (kg) : 6,780

Dimensions and Weight are based on standard configuration.

S16R-(Z3)MPTAW



16-cylinder, 4-cycle, Water cooled, Diesel Engine
Direct-injection, Turbocharged with Air-cooler

Bore x Stroke (mm) : 170 × 180
Displacement (L) : 65.37

Commercial Rating

kW	BHP	RPM	Fuel Cons. L/hr	Rating	Emissions
1,120	1,501	1,200	t.b.c	60Hz	IM02
1,500	2,011	1,500	182.6	50Hz	IM02
1,690	2,265	1,800	211.9	60Hz	IM02

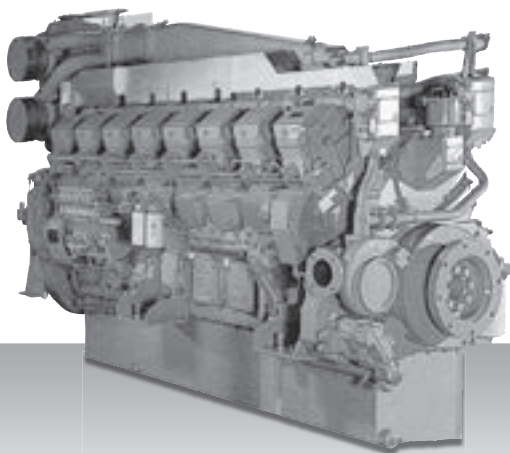
Specifications/data subject to change without prior notice.

Product Dimensions & Dry Weight

L (mm) : 2,971
W (mm) : 1,512
H (mm) : 1,960
Dry Weight (kg) : 6,780

Dimensions and Weight are based on standard configuration.

S16R2-T2MPTAW



16-cylinder, 4-cycle, Water cooled, Diesel Engine
Direct-injection, Turbocharged with Air-cooler

Bore x Stroke (mm): 170 × 220
Displacement (L): 79.9

Commercial Rating

kW	BHP	RPM	Fuel Cons. L/hr	Rating	Emissions
1,568	2,103	1,200	t.b.c.	60Hz	IMO2
1,960	2,628	1,500	t.b.c.	50Hz	IMO2

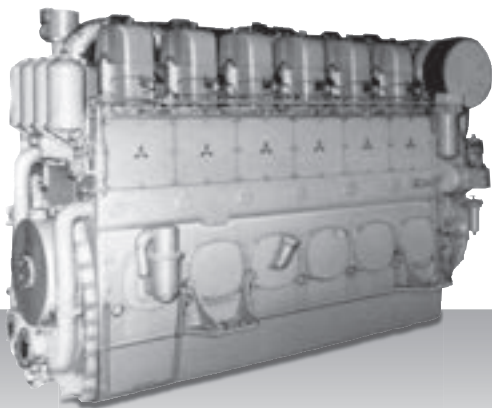
Specifications/data subject to change without prior notice.

Product Dimensions & Dry Weight

L (mm) : 2,946
W (mm) : 1,525
H (mm) : 2,030
Dry Weight (kg) : 7,750

Dimensions and Weight are based on standard configuration.

S6U-MPTK



6-cylinder, 4-cycle, Water cooled, Diesel Engine
Direct-injection, Turbocharged with Air-cooler

Bore x Stroke (mm) : 240 × 260
Displacement (L) : 70.57

Commercial Rating

kW	BHP	RPM	Fuel Cons. g/kWh	Rating	Emissions
1,150	1,543	900	t.b.c.	60Hz	IMO2
1,270	1,704	1,000	t.b.c.	50Hz	IMO2
1,343	1,802	1,200	t.b.c.	60Hz	IMO2

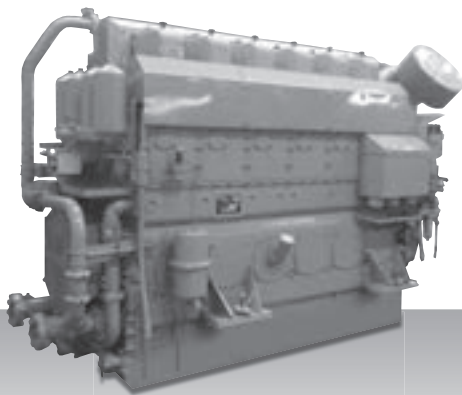
Specifications/data subject to change without prior notice.

Product Dimensions & Dry Weight

L (mm) : 3,211
W (mm) : 1,429
H (mm) : 2,104
Dry Weight (kg) : 8,400

Dimensions and Weight are based on standard configuration.

S6U2-MPTK



6-cylinder, 4-cycle, Water cooled, Diesel Engine
Direct-injection, Turbocharged with Air-cooler

Bore x Stroke (mm) : 240 × 300
Displacement (L) : 81.43

Commercial Rating

kW	BHP	RPM	Fuel Cons. g/kWh	Rating	Emissions
1,250	1,678	900	t.b.c.	60Hz	IMO2
1,363	1,829	1,000	t.b.c.	50Hz	IMO2

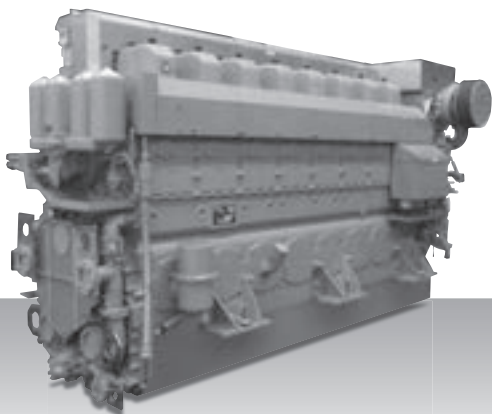
Specifications/data subject to change without prior notice.

Product Dimensions & Dry Weight

L (mm) : 3,226
W (mm) : 1,429
H (mm) : 2,177
Dry Weight (kg) : 8,600

Dimensions and Weight are based on standard configuration.

S8U-MPTK



8-cylinder, 4-cycle, Water cooled, Diesel Engine
Direct-injection, Turbocharged with Air-cooler

Bore x Stroke (mm) : 240 × 260
Displacement (L) : 94.10

Commercial Rating

kW	BHP	RPM	Fuel Cons. g/kWh	Rating	Emissions
1,533	2,057	900	t.b.c.	60Hz	IM02
1,693	2,272	1,000	t.b.c.	50Hz	IM02
1,790	2,402	1,200	t.b.c.	60Hz	IM02

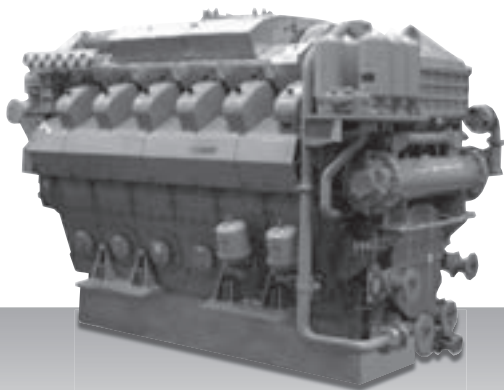
Specifications/data subject to change without prior notice.

Product Dimensions & Dry Weight

L (mm) : 4,065
W (mm) : 1,539
H (mm) : 2,192
Dry Weight (kg) : 11,000

Dimensions and Weight are based on standard configuration.

S12U-MPTK



12-cylinder, 4-cycle, Water cooled, Diesel Engine
Direct-injection, Turbocharged with Air-cooler

Bore x Stroke (mm) : 240 x 260
Displacement (L) : 141.15

Commercial Rating

kW	BHP	RPM	Fuel Cons. g/kWh	Rating	Emissions
2,299	3,085	900	t.b.c.	60Hz	IM02
2,541	3,410	1,000	t.b.c.	50Hz	IM02
2,685	3,603	1,200	t.b.c.	60Hz	IM02

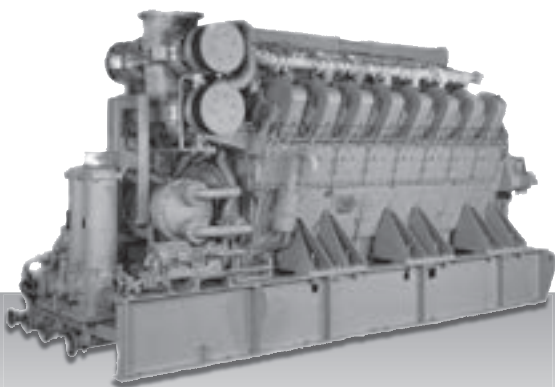
Specifications/data subject to change without prior notice.

Product Dimensions & Dry Weight

L (mm) : 3,562
W (mm) : 1,910
H (mm) : 2,374
Dry Weight (kg) : 16,600

Dimensions and Weight are based on standard configuration.

S16U-MPTK



16-cylinder, 4-cycle, Water cooled, Diesel Engine
Direct-injection, Turbocharged with Air-cooler

Bore x Stroke (mm) : 240 × 260
Displacement (L) : 188.19

Commercial Rating

kW	BHP	RPM	Fuel Cons. g/kWh	Rating	Emissions
3,065	4,113	900	t.b.c.	60Hz	IMO2
3,388	4,547	1,000	t.b.c.	50Hz	IMO2
3,580	4,804	1,200	t.b.c.	60Hz	IMO2

Specifications/data subject to change without prior notice.

Product Dimensions & Dry Weight

L (mm) : 4,628
W (mm) : 1,710
H (mm) : 2,473
Dry Weight (kg) : 20,500

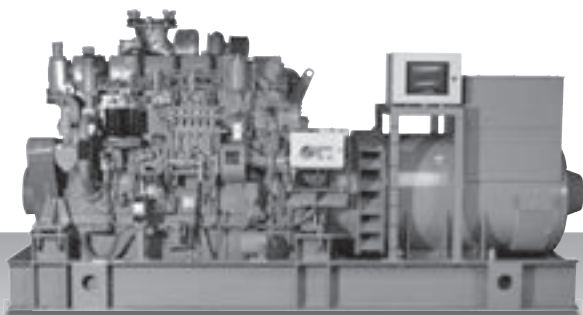
Dimensions and Weight are based on standard configuration.

Genset Specifications

Mitsubishi Gensets combine a Mitsubishi Diesel Engine with Europe's best alternators and a Mitsubishi monitoring system. They have double bearing, IP23 louvers, and a Voltage of 400 at 50HZ or 440 at 60Hz. They are designed to connect to a heat exchange or keel cooling system, and mounted on a steel frame with vibration dampers underneath.

Each Genset is designed and built according to the rules of the major classification societies.

MAS 650-S



Engine Model S6R-(Z3)MPTAW

Commercial Rating

Engine Speed	Effective Generator Output (kVA)	Effective Generator Output (kWe)	Emissions
Diesel-Electric Propulsion			
1,500 (50Hz)	652	522	IM02
1,800 (60Hz)	684	548	IM02
Auxiliary Generator			
1,500 (50Hz)	652	522	IM02
1,800 (60Hz)	753	603	IM02/EU

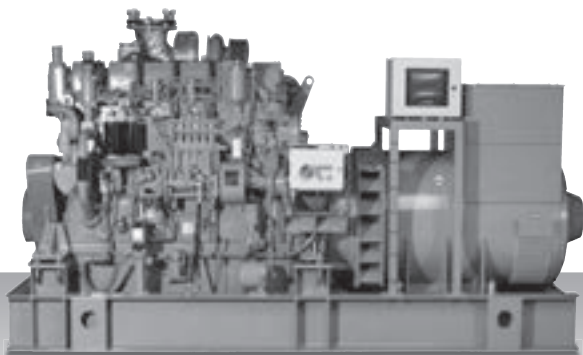
Specifications/ data subject to change without prior notice

Product Dimensions & Dry Weight

L (mm) : 3,600
 W (mm) : 1,615
 H (mm) : 1,900
 Dry Weight (kg) : 5,900

Dimensions and Weight are based on standard configuration.

MAS 760-S



Engine Model S6R2-T2MPTK

Commercial Rating

Engine Speed	Effective Generator Output (kVA)	Effective Generator Output (kWe)	Emissions
Diesel-Electric Propulsion			
1,200(60Hz)	594	476	IM02
1,500(50Hz)	765	612	IM02
Auxiliary Generator			
1,200(60Hz)	594	476	IM02
1,500(50Hz)	765.	612	IM02

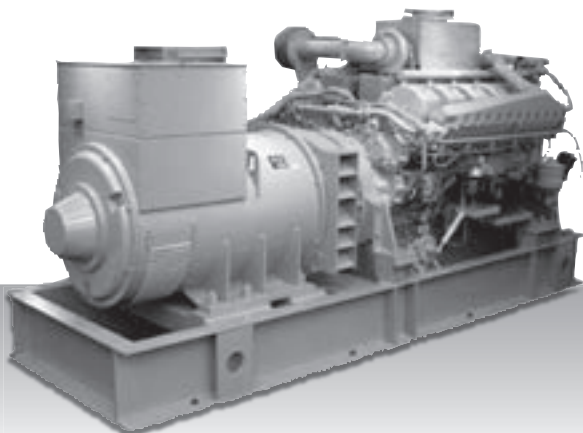
Specifications/ data subject to change without prior notice

Product Dimensions & Dry Weight

L (mm) : 3,600
 W (mm) : 1,615
 H (mm) : 1,931
 Dry Weight (kg) : 6,030

Dimensions and Weight are based on standard configuration.

MAS 850-S



Engine Model S12A2-MPTAW

Commercial Rating

Engine Speed	Effective Generator Output (kVA)	Effective Generator Output (kWe)	Emissions
Diesel-Electric Propulsion			
1,500 (50Hz)	847	678	IM02
1,800 (60Hz)	898	718	IM02
Auxiliary Generator			
1,500 (50Hz)	847	678	IM02
1,800 (60Hz)	988	790	IM02

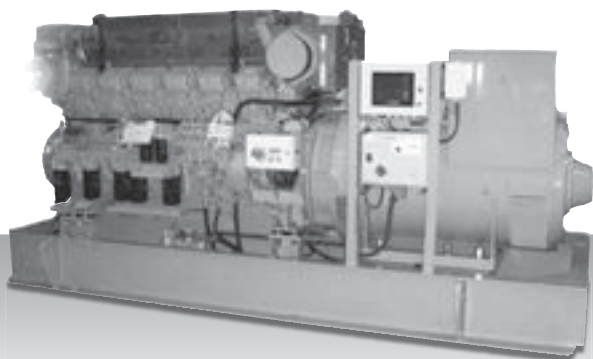
Specifications/ data subject to change without prior notice

Product Dimensions & Dry Weight

L (mm) : 3,760
 W (mm) : 1,818
 H (mm) : 1,900
 Dry Weight (kg) : 8,000

Dimensions and Weight are based on standard configuration.

MAS 1350-S



Engine Model S12R-MPTAW

Commercial Rating

Engine Speed	Effective Generator Output (kVA)	Effective Generator Output (kWe)	Emissions
Diesel-Electric Propulsion			
1,200 (60Hz)	999	799	IM02
1,500 (50Hz)	1,351	1,081	IM02
1,800 (60Hz)	1,385	1,108	IM02
Auxiliary Generator			
1,200 (60Hz)	999	799	IM02
1,500 (50Hz)	1,351	1,081	IM02
1,800 (60Hz)	1,529	1,223	IM02

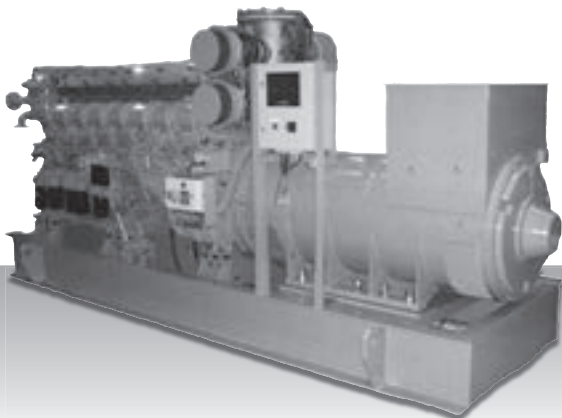
Specifications/ data subject to change without prior notice

Product Dimensions & Dry Weight

L (mm) : 4,100
 W (mm) : 1,725
 H (mm) : 2,280
 Dry Weight (kg) : 10,000

Dimensions and Weight are based on standard configuration.

MAS 1795-S



Engine Model S16R-MPTAW

Commercial Rating

Engine Speed	Effective Generator Output (kVA)	Effective Generator Output (kWe)	Emissions
Diesel-Electric Propulsion			
1,200 (60Hz)	1,337	1,070	IM02
1,500 (50Hz)	1,796	1,437	IM02
1,800 (60Hz)	1,857	1,485	IM02
Auxiliary Generator			
1,200 (60Hz)	1,337	1,070	IM02
1,500 (50Hz)	1,796	1,437	IM02
1,800 (60Hz)	2,041	1,633	IM02

Specifications/ data subject to change without prior notice

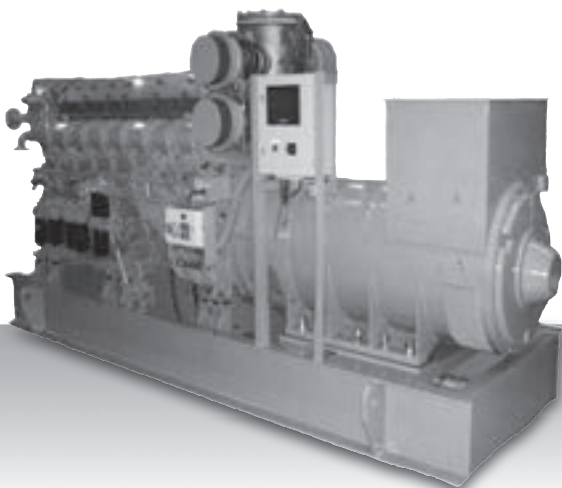
Product Dimensions & Dry Weight

L (mm) : 4,880
 W (mm) : 1,725
 H (mm) : 2,280
 Dry Weight (kg) : 14,000

Dimensions and Weight are based on standard configuration.

Genset

MAS 2350-S



Engine Model S16R2-T2MPTAW

Commercial Rating

Engine Speed	Effective Generator Output (kVA)	Effective Generator Output (kWe)	Emissions
Diesel-Electric Propulsion			
1,200 (60Hz)	1,881	1,505	IM02
1,500 (50Hz)	2,358	1,886	IM02
Auxiliary Generator			
1,200 (60Hz)	1,881	1,505	IM02
1,500 (50Hz)	2,358	1,886	IM02

Specifications/ data subject to change without prior notice

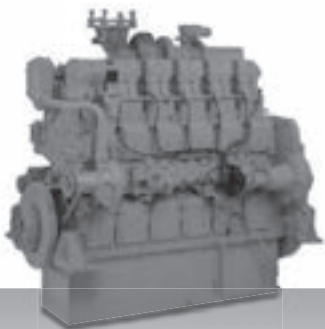
Product Dimensions & Dry Weight

L (mm) : 4,950
W (mm) : 1,750
H (mm) : 2,400
Dry Weight (kg) : 18,000

Dimensions and Weight are based on standard configuration.

Gas-Electric Propulsion Specifications

GS6R-MPTK



6-cylinder, 4-cycle, Water-cooled, Ultra Lean Burn and Pre-Chamber type gas engine (Miller cycle), Turbocharged with Air-cooler.

Bore x Stroke (mm) : 170 x 180
Displacement (L) : 24.51

Commercial Rating

kW	BHP	RPM	Rating	Test Cycle
316	425	1,200	60Hz	E2
361	484	1,500	50Hz	E2

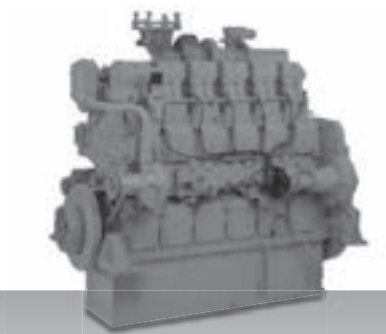
Specifications/data subject to change without prior notice.

Product Dimensions & Dry Weight

L : 1,797
W : 1,088
H : 1,638
Dry Weight : 2,400

Dimensions and Weight are based on standard configuration.

GS6R2-MPTK



6-cylinder, 4-cycle, Water-cooled, Ultra Lean Burn and Pre-Chamber type gas engine (Miller cycle), Turbocharged with Air-cooler.

Bore x Stroke (mm) : 170 x 220

Displacement (L) : 29.96

Commercial Rating

kW	BHP	RPM	Rating	Test Cycle
394	528	1,200	60Hz	E2
on request	t.b.c.	1,500	50Hz	E2

Specifications/data subject to change without prior notice.

Product Dimensions & Dry Weight

L : 1,864

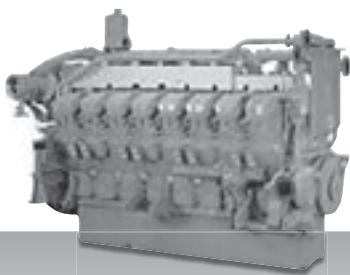
W : 1,063

H : 1,718

Dry Weight : 2,505

Dimensions and Weight are based on standard configuration.

GS12R-MPTK



12-cylinder, 4-cycle, Water-cooled, Ultra Lean Burn and Pre-Chamber type gas engine (Miller cycle), Turbocharged with Air-cooler.

Bore x Stroke (mm) : 170 x 180

Displacement (L) : 49.03

Commercial Rating

kW	BHP	RPM	Rating	Test Cycle
632	847	1,200	60Hz	E2
722	968	1,500	50Hz	E2

Specifications/data subject to change without prior notice.

Product Dimensions & Dry Weight

L : 2,137

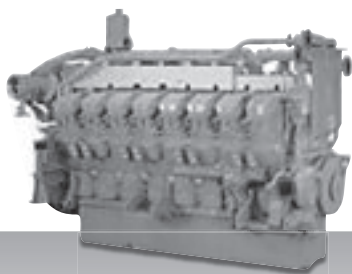
W : 1,832

H : 2,137

Dry Weight : 5,150

Dimensions and Weight are based on standard configuration.

GS16R-MPTK



16-cylinder, 4-cycle, Water-cooled, Ultra Lean Burn and Pre-Chamber type gas engine (Miller cycle), Turbocharged with Air-cooler.

Bore x Stroke (mm) : 170 x 180

Displacement (L) : 65.37

Commercial Rating

kW	BHP	RPM	Rating	Test Cycle
845	1,132	1,200	60Hz	E2
959	1,285	1,500	50Hz	E2

Specifications/data subject to change without prior notice.

Product Dimensions & Dry Weight

L : 2,137

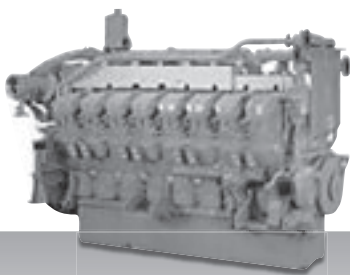
W : 1,899

H : 2,901

Dry Weight : 6,830

Dimensions and Weight are based on standard configuration.

GS16R2-MPTK



16-cylinder, 4-cycle, Water-cooled, Ultra Lean Burn and Pre-Chamber type gas engine (Miller cycle), Turbocharged with Air-cooler.

Bore x Stroke (mm) : 170 x 220

Displacement (L) : 79.9

Commercial Rating

kW	BHP	RPM	Rating	Test Cycle
1,031	1,382	1,200	60Hz	E2
on request	t.b.c.	1,500	50Hz	E2

Specifications/data subject to change without prior notice.

Product Dimensions & Dry Weight

L : 2,301

W : 1,980

H : 3,067

Dry Weight : 7,815

Dimensions and Weight are based on standard configuration.

International Offices

WORLDWIDE

Headquarters

Mitsubishi Heavy Industries, Ltd.

3000, Tana, Chuo-ku, Sagamihara, Kanagawa, 252-5293 Japan

Tel: +81-42-763-7854

Fax: +81-42-761-1994

<http://www.mhi.co.jp/global/index.html>

Asia-Pacific

Singapore

MHI Engine System Asia Pte. Ltd.

No.2, Tuas Avenue 20, Singapore 638818 Republic of Singapore

Tel: +65-6862-2202

Fax: +65-6862-5728

<http://www.mhiesa.com.sg/>

China

MHI Engine System Hong Kong Ltd.

Suite 1121A, 11/F., Ocean Centre, Harbour City, Tsim Sha Tsui, Kowloon, Hong Kong, China

Tel: +852-2375-1816

Fax: +852-2376-3326

MHI Engine System (Shenzhen), Ltd.

No. 7 Building, Mingkeda Logistics Park, No. 18 Huanguan South Road, Guanlan, Baoan District, Shenzhen, Guangdong, China

Tel: +86-755-3388-3030

Fax: +86-755-3368-5000

Indonesia

PT. MHI Engine System Indonesia

#302 Bld. Cilandak Commercial Estate P.O. Box 7510 CCE, Cilandak, Jakarta, Indonesia

Tel: +62-21-7890191

Fax: +62-21-7890278

Philippines

MHI Engine System Philippines, Inc.

Warehouse 4-C, Sunblest Compound, KM 23, West service road Bo. Cupang, Muntinlupa, Philippines

Tel: +63-2-775-0209

Fax: +63-2-775-0310

Vietnam

MHI Engine System Vietnam Co., Ltd.

39 Dai Lo Huu Nghi, Vietnam Singapore Industrial Park Thuan An District, Binh Duong Province, Socialist Republic of Vietnam

Tel: +84-650-3769-255

Fax: +84-650-3769-262

Europe, Africa, Middle East

Netherlands

MHI Equipment Europe B.V.

Damsluisweg 2, 1332 EC, Almere, The Netherlands

Tel: +31-36-538-8311

Fax: +31-36-538-8342

<http://www.mitsubishi-engines.nl>

info@mhimee.nl

U.A.E.

MHI Engine System Middle East FZE

Sharjah Airport International Free (SAIF) Zone

Q4-44, P.O. Box 121801, Sharjah, UAE

Tel: +971-6-548-9295

Fax: +971-6-548-9294

Americas

U.S.A.

Mitsubishi Engine North America, Inc.

1250 Greenbriar Drive, Suite E Addison, IL 60101-1065, U.S.A.

Tel: +1-630-268-0750

Fax: +1-630-268-9293

<http://www.mitsubishi-engine.com/>

Brazil

MHI Sul Americana Distribuidora de Motores Ltda.

Rua Cincinato Braga, 37-10 andar cj 101 Bela Vista, CEP 01333-011,

Sao Paulo, SP, Brazil

Tel: +55-11-3515-7890

Fax: +55-11-3515-7899

EUROPE

Headquarters

MHI Equipment Europe B.V.

Damsluisweg 2, 1332 EC, Almere, The Netherlands

Tel: +31-36-538-8311

Fax: +31-36-538-8342

<http://www.mitsubishi-engines.nl>

info@mhimee.nl

DISTRIBUTORS AND DEALERS OF MARINE ENGINES

Albania, Bosnia and Herzegovina, Croatia, Macedonia, Montenegro, Serbia, Slovenia

Expo Comm Inzeniring
expocomm@expocomm.si

Germany, Austria, Switzerland

ScanDiesel GmbH
<http://www.scandiesel.de>

Republic of Belarus

Motors & Transmission
<http://www.mit.by>

Denmark

West Diesel A.S.
<http://www.westdiesel.dk>

Finland

Merimoottorit Oy
merimoottorit@kolumbus.fi

France

Midif
<http://www.midif.fr>

Greece

A.El.M.A. sa
<http://www.aeima.gr>

Iceland

MD Vélar ehf.
<http://www.mdvelar.si>

Islamic Republic of Iran

Farastan Co. Ltd.
<http://www.farastan.com>

Ireland

Padmos
<http://www.padmos.nl>

Italy

Cerdiesel S.p.A.
<http://www.cerdiesel.com>

Compagnia Technica Motori S.p.A.
<http://www.ctm.it>

Latvia

Varmaa Sia
info@varmaa.lv

Morocco

Midima
<http://www.midima.ma>

The Netherlands, Luxembourg

Koedood Dieselservice
<http://www.koedood.nl>

Padmos
<http://www.padmos.nl>

Olthof Engine Service
<http://www.mfolthof.nl>

Norway

Diesel Power AS
<http://www.dieselpower.no>

Poland

BTH Fast
<http://www.bthfast.eu>

Romania

SC Watermota Srl
<http://www.watermota.ro>

Russia

Perpetuum Mobile Ltd
<http://www.p-mobile.ru>

South Africa

New Way Motor & Diesel
Engineering (Pty) Ltd.
<http://www.newway.co.za>

Spain, Portugal

MEE Iberica
Sucursal Espana
<http://www.mitsubishi-diesel.com>

Sweden

Power House AB
[http://www.powerholding.se/
powerhouse](http://www.powerholding.se/powerhouse)

Turkey

Enka Marketing Export
Import Inc.
<http://www.enka.com.tr>

United Kingdom

Diamond Diesels Ltd
<http://www.diamonddiesels.co.uk>



MHI Equipment Europe B.V.

Damsluisweg 2, 1332 EC Almere, The Netherlands

Phone +31-36-538-8311 Fax +31-36-538-8342

<http://www.mitsubishi-engines.nl>

info@mhimee.nl